

DATASHEET

EAAT2 Rabbit Monoclonal Antibody(C1804)

CAT. NO. AMA01416

KEY FEATURES

Target	EAAT2	Source / Host	Rabbit
Reactivity	Human, Mouse, Rat	Clonality	Monoclonal
Applications	WB, IP	Conjugation	Unconjugated
Form / Buffer	Liquid in PBS, pH 7.4, containing 50% glycerol, 0.2% BSA and 0.01% sodium azide.	Storage	at-20°C

BACKGROUND

Sodium-dependent, high-affinity amino acid transporter that mediates the uptake of L-glutamate and also L-aspartate and D-aspartate. Functions as a symporter that transports one amino acid molecule together with two or three Na(+) ions and one proton, in parallel with the counter-transport of one K(+) ion. Mediates Cl(-) flux that is not coupled to amino acid transport; this avoids the accumulation of negative charges due to aspartate and Na(+) symport. Essential for the rapid removal of released glutamate from the synaptic cleft, and for terminating the postsynaptic action of glutamate.

APPLICATION

To ensure optimal assay performance, AREX recommends conducting reagent titration tailored to each testing system for optimal detection results.

WB	1:500 - 1:1000
IP	1:10 - 1:50

*Results are sample-specific. Please refer to your local assay conditions and test parameters for reference.

PRODUCT OVERVIEW

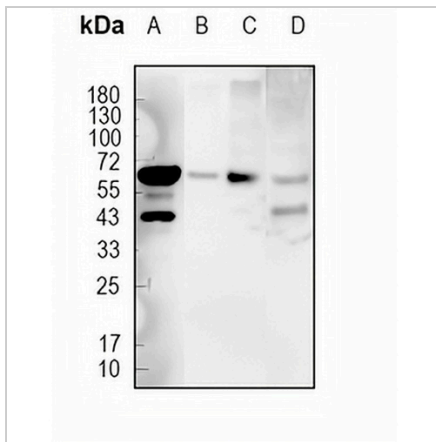
Description	Recombinant rabbit monoclonal antibody to EAAT2
Specificity	Recognizes endogenous levels of EAAT2 protein
Antibody Type	Primary antibody, Recombinant
Immunogen	KLH-conjugated synthetic peptide encompassing a sequence within human EAAT2 protein. The exact sequence is proprietary.
Purification	The antibody was purified by immunogen affinity chromatography.
Molecular Weight	Predicted: 62 kD; Observed: 62 kD
Form/Buffer	Liquid in PBS, pH 7.4, containing 50% glycerol, 0.2% BSA and 0.01% sodium azide.
Alternative Names	EAAT2; GLT1; Excitatory amino acid transporter 2; Glutamate/aspartate transporter II; Sodium-dependent glutamate/aspartate transporter 2; Solute carrier family 1 member 2
Gene Symbol	SLC1A2
Entrez Gene	6506(Human); 20511(Mouse); 29482(Rat)
SwissProt	P43004(Human); P43006(Mouse); P31596(Rat)

*AREX continuously optimizes our products. Webpage content may not reflect the latest updates. For inquiries, please contact info@arexbio.com or your local distributor.

*Clone Number, Reactivity, Source/Host and Clonality can be found in the product name and Key Features section above.

DATASHEET**EAAT2 Rabbit Monoclonal Antibody(C1804)**

CAT. NO. AMA01416

DATA

Western blot analysis of EAAT2 expression in HEK293T (A), HepG2 (B), mouse brain (C), rat brain (D) whole cell lysates. (Predicted band size: 62 kD; Observed band size: 62 kD)

STORAGE

Store at 4°C short term. For long term storage, store at -20°C, avoiding freeze/thaw cycles.

NOTE

For Research Use Only. Not for diagnostic, therapeutics, prophylactic or in vivo use.