

DATASHEET

LMO2 Rabbit Monoclonal Antibody(C1807)

CAT. NO. AMA01419

KEY FEATURES

Target	LMO2	Source / Host	Rabbit
Reactivity	Human, Mouse, Rat	Clonality	Monoclonal
Applications	WB, IP	Conjugation	Unconjugated
Form / Buffer	Liquid in PBS, pH 7.4, containing 50% glycerol, 0.2% BSA and 0.01% sodium azide.	Storage	at-20°C

BACKGROUND

Acts with TAL1/SCL to regulate red blood cell development. Also acts with LDB1 to maintain erythroid precursors in an immature state.

APPLICATION

To ensure optimal assay performance, AREX recommends conducting reagent titration tailored to each testing system for optimal detection results.

WB	1:500 - 1:1000
IP	1:10 - 1:50

*Results are sample-specific. Please refer to your local assay conditions and test parameters for reference.

PRODUCT OVERVIEW

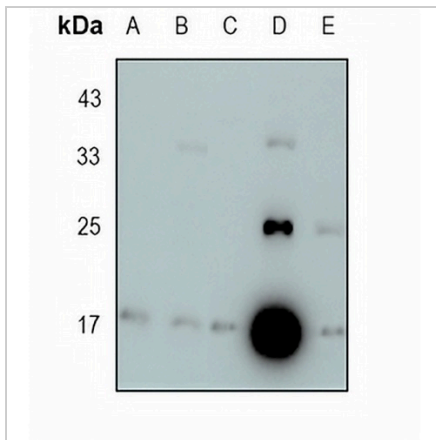
Description	Recombinant rabbit monoclonal antibody to LMO2
Specificity	Recognizes endogenous levels of LMO2 protein
Antibody Type	Primary antibody, Recombinant
Immunogen	KLH-conjugated synthetic peptide encompassing a sequence within human LMO2 protein. The exact sequence is proprietary.
Purification	The antibody was purified by immunogen affinity chromatography.
Molecular Weight	Predicted: 18, 25 kD; Observed: 18, 25 kD
Form/Buffer	Liquid in PBS, pH 7.4, containing 50% glycerol, 0.2% BSA and 0.01% sodium azide.
Alternative Names	RBTN2; RBTNL1; RHOM2; TTG2; Rhombotin-2; Cysteine-rich protein TTG-2; LIM domain only protein 2; LMO-2; T-cell translocation protein 2
Gene Symbol	LMO2
Entrez Gene	4005(Human); 16909(Mouse)
SwissProt	P25791(Human); P25801(Mouse)

*AREX continuously optimizes our products. Webpage content may not reflect the latest updates. For inquiries, please contact info@arexbio.com or your local distributor.

*Clone Number, Reactivity, Source/Host and Clonality can be found in the product name and Key Features section above.

DATASHEET**LMO2 Rabbit Monoclonal Antibody(C1807)**

CAT. NO. AMA01419

DATA

Western blot analysis of LMO2 expression in mouse liver (A), mouse kidney (B), rat brain (C), HEK293T (D), MDAMB231 (E) whole cell lysates. (Predicted band size: 18, 25 kD; Observed band size: 18, 25 kD)

STORAGE

Store at 4°C short term. For long term storage, store at -20°C, avoiding freeze/thaw cycles.

NOTE

For Research Use Only. Not for diagnostic, therapeutics, prophylactic or in vivo use.