

DATASHEET

Glutathione Reductase Rabbit Monoclonal Antibody(C1811)

CAT. NO. AMA01423

KEY FEATURES

Target	Glutathione Reductase	Source / Host	Rabbit
Reactivity	Human, Mouse, Rat	Clonality	Monoclonal
Applications	WB	Conjugation	Unconjugated
Form / Buffer	Liquid in PBS, pH 7.4, containing 50% glycerol, 0.2% BSA and 0.01% sodium azide.	Storage	at-20°C

BACKGROUND

Catalyzes the reduction of glutathione disulfide (GSSG) to reduced glutathione (GSH). Constitutes the major mechanism to maintain a high GSH:GSSG ratio in the cytosol.

APPLICATION

To ensure optimal assay performance, AREX recommends conducting reagent titration tailored to each testing system for optimal detection results.

WB	1:500 - 1:1000
----	----------------

*Results are sample-specific. Please refer to your local assay conditions and test parameters for reference.

PRODUCT OVERVIEW

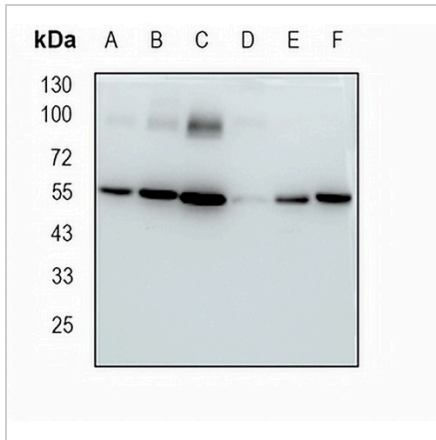
Description	Recombinant rabbit monoclonal antibody to Glutathione Reductase
Specificity	Recognizes endogenous levels of Glutathione Reductase protein
Antibody Type	Primary antibody, Recombinant
Immunogen	KLH-conjugated synthetic peptide encompassing a sequence within human Glutathione Reductase protein. The exact sequence is proprietary.
Purification	The antibody was purified by immunogen affinity chromatography.
Molecular Weight	Predicted: 56 kD; Observed: 56 kD
Form/Buffer	Liquid in PBS, pH 7.4, containing 50% glycerol, 0.2% BSA and 0.01% sodium azide.
Alternative Names	GLUR; GRD1; Glutathione reductase, mitochondrial; GR; GRase
Gene Symbol	GSR
Entrez Gene	2936(Human); 14782(Mouse)
SwissProt	P00390(Human); P47791(Mouse); P70619(Rat)

*AREX continuously optimizes our products. Webpage content may not reflect the latest updates. For inquiries, please contact info@arexbio.com or your local distributor.

*Clone Number, Reactivity, Source/Host and Clonality can be found in the product name and Key Features section above.

DATASHEET**Glutathione Reductase Rabbit Monoclonal Antibody(C1811)**

CAT. NO. AMA01423

DATA

Western blot analysis of Glutathione Reductase expression in mouse liver (A), mouse kidney (B), rat kidney (C), rat brain (D), HEK293T (E), MDAMB231 (F) whole cell lysates. (Predicted band size: 56 kD; Observed band size: 56 kD)

STORAGE

Store at 4°C short term. For long term storage, store at -20°C, avoiding freeze/thaw cycles.

NOTE

For Research Use Only. Not for diagnostic, therapeutics, prophylactic or in vivo use.