

**DATASHEET**
**ERK1/2 (Phospho-T202+T185) Rabbit Monoclonal Antibody(C1832)**
**CAT. NO. AMA01444**
**KEY FEATURES**

|               |                                                                                  |               |              |
|---------------|----------------------------------------------------------------------------------|---------------|--------------|
| Target        | ERK1/2 (Phospho-T202+T185)                                                       | Source / Host | Rabbit       |
| Reactivity    | Human                                                                            | Clonality     | Monoclonal   |
| Applications  | WB, IP                                                                           | Conjugation   | Unconjugated |
| Form / Buffer | Liquid in PBS, pH 7.4, containing 50% glycerol, 0.2% BSA and 0.01% sodium azide. | Storage       | at-20°C      |

**BACKGROUND**

Serine/threonine kinase which acts as an essential component of the MAP kinase signal transduction pathway. MAPK1/ERK2 and MAPK3/ERK1 are the 2 MAPKs which play an important role in the MAPK/ERK cascade. They participate also in a signaling cascade initiated by activated KIT and KITLG/SCF. Depending on the cellular context, the MAPK/ERK cascade mediates diverse biological functions such as cell growth, adhesion, survival and differentiation through the regulation of transcription, translation, cytoskeletal rearrangements. The MAPK/ERK cascade also plays a role in initiation and regulation of meiosis, mitosis, and postmitotic functions in differentiated cells by phosphorylating a number of transcription factors. About 160 substrates have already been discovered for ERKs.

**APPLICATION**

To ensure optimal assay performance, AREX recommends conducting reagent titration tailored to each testing system for optimal detection results.

|    |                |
|----|----------------|
| WB | 1:500 - 1:1000 |
| IP | 1:10 - 1:50    |

\*Results are sample-specific. Please refer to your local assay conditions and test parameters for reference.

**PRODUCT OVERVIEW**

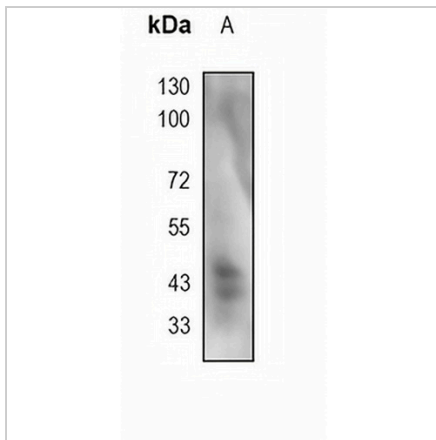
|                   |                                                                                                                                                                                                                                                                                                                                                                                                                                                                                                |
|-------------------|------------------------------------------------------------------------------------------------------------------------------------------------------------------------------------------------------------------------------------------------------------------------------------------------------------------------------------------------------------------------------------------------------------------------------------------------------------------------------------------------|
| Description       | Recombinant rabbit monoclonal antibody to ERK1/2 (Phospho-T202+T185)                                                                                                                                                                                                                                                                                                                                                                                                                           |
| Specificity       | Recognizes endogenous levels of ERK1/2 (Phospho-T202+T185) protein                                                                                                                                                                                                                                                                                                                                                                                                                             |
| Antibody Type     | Primary antibody, Recombinant                                                                                                                                                                                                                                                                                                                                                                                                                                                                  |
| Immunogen         | KLH-conjugated synthetic peptide encompassing a sequence within human ERK1/2 (Phospho-T202+T185) protein. The exact sequence is proprietary.                                                                                                                                                                                                                                                                                                                                                   |
| Purification      | The antibody was purified by immunogen affinity chromatography.                                                                                                                                                                                                                                                                                                                                                                                                                                |
| Molecular Weight  | Predicted: 43 kD; Observed: 42, 44 kD                                                                                                                                                                                                                                                                                                                                                                                                                                                          |
| Form/Buffer       | Liquid in PBS, pH 7.4, containing 50% glycerol, 0.2% BSA and 0.01% sodium azide.                                                                                                                                                                                                                                                                                                                                                                                                               |
| Alternative Names | MAPK1; ERK2; PRKM1; PRKM2; Mitogen-activated protein kinase 1; MAP kinase 1; MAPK 1; ERT1; Extracellular signal-regulated kinase 2; ERK-2; MAP kinase isoform p42; p42-MAPK; Mitogen-activated protein kinase 2; MAP kinase 2; MAPK 2; MAPK3; ERK1; PRKM3; Mitogen-activated protein kinase 3; MAP kinase 3; MAPK 3; ERT2; Extracellular signal-regulated kinase 1; ERK-1; Insulin-stimulated MAP2 kinase; MAP kinase isoform p44; p44-MAPK; Microtubule-associated protein 2 kinase; p44-ERK1 |
| Gene Symbol       | MAPK1; MAPK3                                                                                                                                                                                                                                                                                                                                                                                                                                                                                   |
| Entrez Gene       | 5594; 5595(Human)                                                                                                                                                                                                                                                                                                                                                                                                                                                                              |
| SwissProt         | P28482; P27361(Human)                                                                                                                                                                                                                                                                                                                                                                                                                                                                          |

\*AREX continuously optimizes our products. Webpage content may not reflect the latest updates. For inquiries, please contact [info@arexbio.com](mailto:info@arexbio.com) or your local distributor.

\*Clone Number, Reactivity, Source/Host and Clonality can be found in the product name and Key Features section above.

**DATASHEET****ERK1/2 (Phospho-T202+T185) Rabbit Monoclonal Antibody(C1832)**

CAT. NO. AMA01444

**DATA**

Western blot analysis of ERK1/2 (Phospho-T202+T185) expression in mouse lung (A) whole cell lysates. (Predicted band size: 43 kD; Observed band size: 42, 44 kD)

**STORAGE**

Store at 4°C short term. For long term storage, store at -20°C, avoiding freeze/thaw cycles.

**NOTE**

For Research Use Only. Not for diagnostic, therapeutics, prophylactic or in vivo use.