

DATASHEET

Pr-Set7 Rabbit Monoclonal Antibody(C1834)

CAT. NO. AMA01446

KEY FEATURES

Target	Pr-Set7	Source / Host	Rabbit
Reactivity	Human, Mouse, Rat	Clonality	Monoclonal
Applications	WB	Conjugation	Unconjugated
Form / Buffer	Liquid in PBS, pH 7.4, containing 50% glycerol, 0.2% BSA and 0.01% sodium azide.	Storage	at-20°C

BACKGROUND

Protein-lysine N-methyltransferase that monomethylates both histones and non-histone proteins . Specifically monomethylates 'Lys-20' of histone H4 (H4K20me1) . H4K20me1 is enriched during mitosis and represents a specific tag for epigenetic transcriptional repression . Mainly functions in euchromatin regions, thereby playing a central role in the silencing of euchromatic genes . Required for cell proliferation, probably by contributing to the maintenance of proper higher-order structure of DNA during mitosis . Involved in chromosome condensation and proper cytokinesis . Nucleosomes are preferred as substrate compared to free histones . Mediates monomethylation of p53/TP53 at 'Lys-382', leading to repress p53/TP53-target genes .

APPLICATION

To ensure optimal assay performance, AREX recommends conducting reagent titration tailored to each testing system for optimal detection results.

WB	1:500 - 1:1000
----	----------------

*Results are sample-specific. Please refer to your local assay conditions and test parameters for reference.

PRODUCT OVERVIEW

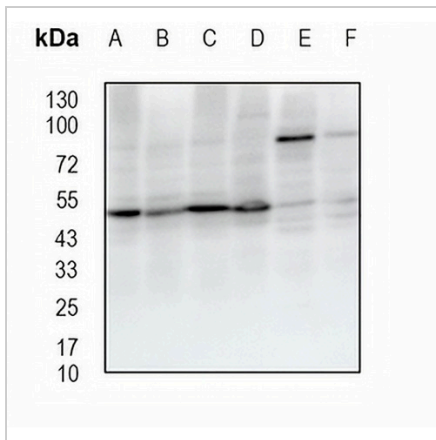
Description	Recombinant rabbit monoclonal antibody to Pr-Set7
Specificity	Recognizes endogenous levels of Pr-Set7 protein
Antibody Type	Primary antibody, Recombinant
Immunogen	KLH-conjugated synthetic peptide encompassing a sequence within human Pr-Set7 protein. The exact sequence is proprietary.
Purification	The antibody was purified by immunogen affinity chromatography.
Molecular Weight	Predicted: 42 kD; Observed: 50 kD
Form/Buffer	Liquid in PBS, pH 7.4, containing 50% glycerol, 0.2% BSA and 0.01% sodium azide.
Alternative Names	KMT5A; PRSET7; SET07; SET8; N-lysine methyltransferase SETD8; H4-K20-HMTase SETD8; Histone-lysine N-methyltransferase SETD8; Lysine N-methyltransferase 5A; PR/SET domain-containing protein 07; PR-Set7; PR/SET07; SET domain-containing protein 8
Gene Symbol	SETD8
Entrez Gene	387893(Human); 67956(Mouse)
SwissProt	Q9NQR1(Human); Q2YDW7(Mouse)

*AREX continuously optimizes our products. Webpage content may not reflect the latest updates. For inquiries, please contact info@arexbio.com or your local distributor.

*Clone Number, Reactivity, Source/Host and Clonality can be found in the product name and Key Features section above.

DATASHEET**Pr-Set7 Rabbit Monoclonal Antibody(C1834)**

CAT. NO. AMA01446

DATA

Western blot analysis of Pr-Set7 expression in mouse liver (A), mouse kidney (B), rat kidney (C), rat brain (D), HEK293T (E), MDAMB231 (F) whole cell lysates. (Predicted band size: 42 kD; Observed band size: 50 kD)

STORAGE

Store at 4°C short term. For long term storage, store at -20°C, avoiding freeze/thaw cycles.

NOTE

For Research Use Only. Not for diagnostic, therapeutics, prophylactic or in vivo use.