

DATASHEET

Importin alpha 2 Rabbit Monoclonal Antibody(C1841)

CAT. NO. AMA01453

KEY FEATURES

Target	Importin alpha 2	Source / Host	Rabbit
Reactivity	Human, Mouse	Clonality	Monoclonal
Applications	WB	Conjugation	Unconjugated
Form / Buffer	Liquid in PBS, pH 7.4, containing 50% glycerol, 0.2% BSA and 0.01% sodium azide.	Storage	at-20°C

BACKGROUND

Functions in nuclear protein import as an adapter protein for nuclear receptor KPNB1 . Binds specifically and directly to substrates containing either a simple or bipartite NLS motif . Docking of the importin/substrate complex to the nuclear pore complex (NPC) is mediated by KPNB1 through binding to nucleoporin FxFG repeats and the complex is subsequently translocated through the pore by an energy requiring, Ran-dependent mechanism . At the nucleoplasmic side of the NPC, Ran binds to importin-beta and the three components separate and importin-alpha and -beta are re-exported from the nucleus to the cytoplasm where GTP hydrolysis releases Ran from importin.

APPLICATION

To ensure optimal assay performance, AREX recommends conducting reagent titration tailored to each testing system for optimal detection results.

WB	1:500 - 1:1000
----	----------------

*Results are sample-specific. Please refer to your local assay conditions and test parameters for reference.

PRODUCT OVERVIEW

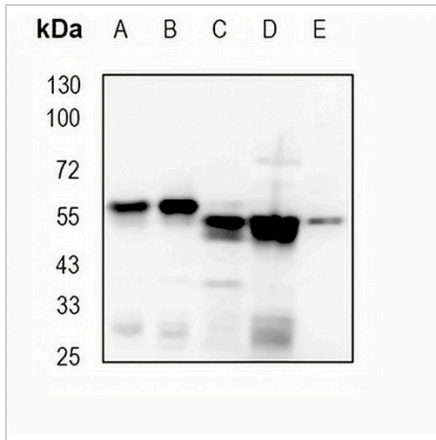
Description	Recombinant rabbit monoclonal antibody to Importin alpha 2
Specificity	Recognizes endogenous levels of Importin alpha 2 protein
Antibody Type	Primary antibody, Recombinant
Immunogen	KLH-conjugated synthetic peptide encompassing a sequence within human Importin alpha 2 protein. The exact sequence is proprietary.
Purification	The antibody was purified by immunogen affinity chromatography.
Molecular Weight	Predicted: 57 kD; Observed: 57 kD
Form/Buffer	Liquid in PBS, pH 7.4, containing 50% glycerol, 0.2% BSA and 0.01% sodium azide.
Alternative Names	RCH1; SRP1; Importin subunit alpha-1; Karyopherin subunit alpha-2; RAG cohort protein 1; SRP1-alpha
Gene Symbol	KPNA2
Entrez Gene	3838(Human); 16647(Mouse)
SwissProt	P52292(Human); P52293(Mouse)

*AREX continuously optimizes our products. Webpage content may not reflect the latest updates. For inquiries, please contact info@arexbio.com or your local distributor.

*Clone Number, Reactivity, Source/Host and Clonality can be found in the product name and Key Features section above.

DATASHEET**Importin alpha 2 Rabbit Monoclonal Antibody(C1841)**

CAT. NO. AMA01453

DATA

Western blot analysis of Importin alpha 2 expression in MCF7 (A), A2780 (B), HeLa (C), mouse testis (D), mouse muscle (E) whole cell lysates. (Predicted band size: 57 kD; Observed band size: 57 kD)

STORAGE

Store at 4°C short term. For long term storage, store at -20°C, avoiding freeze/thaw cycles.

NOTE

For Research Use Only. Not for diagnostic, therapeutics, prophylactic or in vivo use.