

DATASHEET

PRPF31 Rabbit Monoclonal Antibody(C1850)

CAT. NO. AMA01462

KEY FEATURES

Target	PRPF31	Source / Host	Rabbit
Reactivity	Human, Mouse, Rat	Clonality	Monoclonal
Applications	WB	Conjugation	Unconjugated
Form / Buffer	Liquid in PBS, pH 7.4, containing 50% glycerol, 0.2% BSA and 0.01% sodium azide.	Storage	at-20°C

BACKGROUND

Involved in pre-mRNA splicing as component of the spliceosome . Required for the assembly of the U4/U5/U6 tri-snRNP complex, one of the building blocks of the spliceosome .

APPLICATION

To ensure optimal assay performance, AREX recommends conducting reagent titration tailored to each testing system for optimal detection results.

WB	1:500 - 1:1000
----	----------------

*Results are sample-specific. Please refer to your local assay conditions and test parameters for reference.

PRODUCT OVERVIEW

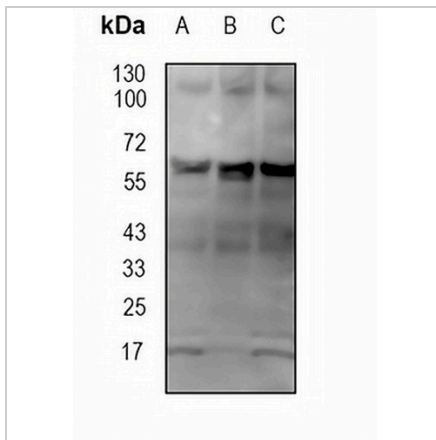
Description	Recombinant rabbit monoclonal antibody to PRPF31
Specificity	Recognizes endogenous levels of PRPF31 protein
Antibody Type	Primary antibody, Recombinant
Immunogen	KLH-conjugated synthetic peptide encompassing a sequence within human PRPF31 protein. The exact sequence is proprietary.
Purification	The antibody was purified by immunogen affinity chromatography.
Molecular Weight	Predicted: 55 kD; Observed: 60 kD
Form/Buffer	Liquid in PBS, pH 7.4, containing 50% glycerol, 0.2% BSA and 0.01% sodium azide.
Alternative Names	PRP31; U4/U6 small nuclear ribonucleoprotein Prp31; Pre-mRNA-processing factor 31; Serologically defined breast cancer antigen NY-BR-99; U4/U6 snRNP 61 kDa protein; Protein 61K; hPrp31
Gene Symbol	PRPF31
Entrez Gene	26121(Human); 68988(Mouse)
SwissProt	Q8WWY3(Human); Q8CCF0(Mouse)

*AREX continuously optimizes our products. Webpage content may not reflect the latest updates. For inquiries, please contact info@arexbio.com or your local distributor.

*Clone Number, Reactivity, Source/Host and Clonality can be found in the product name and Key Features section above.

DATASHEET**PRPF31 Rabbit Monoclonal Antibody(C1850)**

CAT. NO. AMA01462

DATA

Western blot analysis of PRPF31 expression in mouse kidney (A), rat lung (B), rat kidney (C) whole cell lysates. (Predicted band size: 55 kD; Observed band size: 60 kD)

STORAGE

Store at 4°C short term. For long term storage, store at -20°C, avoiding freeze/thaw cycles.

NOTE

For Research Use Only. Not for diagnostic, therapeutics, prophylactic or in vivo use.