

DATASHEET

TCTEX-1 Rabbit Monoclonal Antibody(C1855)

CAT. NO. AMA01467

KEY FEATURES

Target	TCTEX-1	Source / Host	Rabbit
Reactivity	Human, Mouse, Rat	Clonality	Monoclonal
Applications	WB, IP	Conjugation	Unconjugated
Form / Buffer	Liquid in PBS, pH 7.4, containing 50% glycerol, 0.2% BSA and 0.01% sodium azide.	Storage	at-20°C

BACKGROUND

Component of dynein, a family of motor proteins essential for movement along microtubules . Required for structural and functional integrity of cilia . Acts as one of several non-catalytic accessory components of the cytoplasmic dynein 1 complex that are thought to be involved in linking dynein to cargos and to adapter proteins that regulate dynein function. Cytoplasmic dynein 1 acts as a motor for the intracellular retrograde motility of vesicles and organelles along microtubules. Binds to transport cargos and is involved in apical cargo transport such as rhodopsin-bearing vesicles in polarized epithelia.

APPLICATION

To ensure optimal assay performance, AREX recommends conducting reagent titration tailored to each testing system for optimal detection results.

WB	1:500 - 1:1000
IP	1:10 - 1:50

*Results are sample-specific. Please refer to your local assay conditions and test parameters for reference.

PRODUCT OVERVIEW

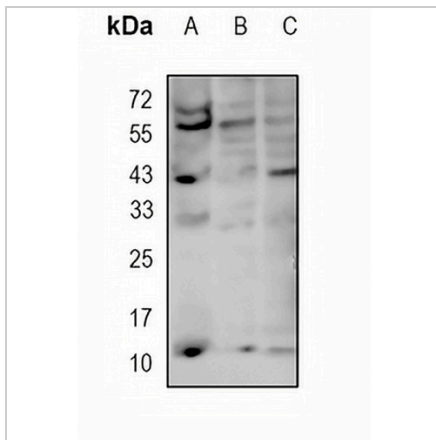
Description	Recombinant rabbit monoclonal antibody to TCTEX-1
Specificity	Recognizes endogenous levels of TCTEX-1 protein
Antibody Type	Primary antibody, Recombinant
Immunogen	KLH-conjugated synthetic peptide encompassing a sequence within human TCTEX-1 protein. The exact sequence is proprietary.
Purification	The antibody was purified by immunogen affinity chromatography.
Molecular Weight	Predicted: 12 kD; Observed: 12 kD
Form/Buffer	Liquid in PBS, pH 7.4, containing 50% glycerol, 0.2% BSA and 0.01% sodium azide.
Alternative Names	TCTEL1; TCTEX-1; TCTEX1; Dynein light chain Tctex-type 1; Protein CW-1; T-complex testis-specific protein 1 homolog
Gene Symbol	DYNLT1
Entrez Gene	6993(Human); 100040531;100040563;100310872;21648(Mouse); 83462(Rat)
SwissProt	P63172(Human); P51807(Mouse); Q9Z336(Rat)

*AREX continuously optimizes our products. Webpage content may not reflect the latest updates. For inquiries, please contact info@arexbio.com or your local distributor.

*Clone Number, Reactivity, Source/Host and Clonality can be found in the product name and Key Features section above.

DATASHEET**TCTEX-1 Rabbit Monoclonal Antibody(C1855)**

CAT. NO. AMA01467

DATA

Western blot analysis of TCTEX-1 expression in mouse testis (A), rat kidney (B), rat testis (C) whole cell lysates. (Predicted band size: 12 kD; Observed band size: 12 kD)

STORAGE

Store at 4°C short term. For long term storage, store at -20°C, avoiding freeze/thaw cycles.

NOTE

For Research Use Only. Not for diagnostic, therapeutics, prophylactic or in vivo use.