

DATASHEET

DNA Ligase 1 Rabbit Monoclonal Antibody(C1872)

CAT. NO. AMA01484

KEY FEATURES

Target	DNA Ligase 1	Source / Host	Rabbit
Reactivity	Human	Clonality	Monoclonal
Applications	WB	Conjugation	Unconjugated
Form / Buffer	Liquid in PBS, pH 7.4, containing 50% glycerol, 0.2% BSA and 0.01% sodium azide.	Storage	at-20°C

BACKGROUND

DNA ligase that seals nicks in double-stranded during DNA repair . Also involved in DNA replication and DNA recombination.

APPLICATION

To ensure optimal assay performance, AREX recommends conducting reagent titration tailored to each testing system for optimal detection results.

WB	1:500 - 1:1000
----	----------------

*Results are sample-specific. Please refer to your local assay conditions and test parameters for reference.

PRODUCT OVERVIEW

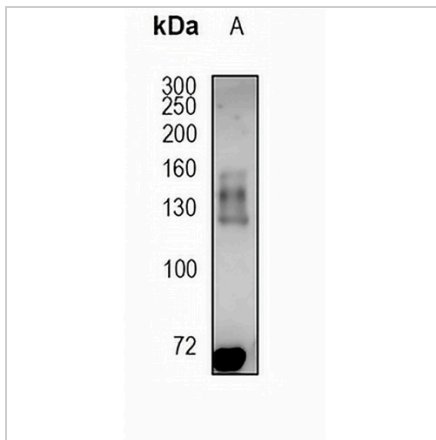
Description	Recombinant rabbit monoclonal antibody to DNA Ligase 1
Specificity	Recognizes endogenous levels of DNA Ligase 1 protein
Antibody Type	Primary antibody, Recombinant
Immunogen	KLH-conjugated synthetic peptide encompassing a sequence within human DNA Ligase 1 protein. The exact sequence is proprietary.
Purification	The antibody was purified by immunogen affinity chromatography.
Molecular Weight	Predicted: 101 kD; Observed: 140 kD
Form/Buffer	Liquid in PBS, pH 7.4, containing 50% glycerol, 0.2% BSA and 0.01% sodium azide.
Alternative Names	DNA ligase 1; DNA ligase I; Polydeoxyribonucleotide synthase [ATP] 1
Gene Symbol	LIG1
Entrez Gene	3978(Human)
SwissProt	P18858(Human)

*AREX continuously optimizes our products. Webpage content may not reflect the latest updates. For inquiries, please contact info@arexbio.com or your local distributor.

*Clone Number, Reactivity, Source/Host and Clonality can be found in the product name and Key Features section above.

DATASHEET**DNA Ligase 1 Rabbit Monoclonal Antibody(C1872)**

CAT. NO. AMA01484

DATA

Western blot analysis of DNA Ligase 1 expression in A2780 (A) whole cell lysates.
(Predicted band size: 101 kD; Observed band size: 140 kD)

STORAGE

Store at 4°C short term. For long term storage, store at -20°C, avoiding freeze/thaw cycles.

NOTE

For Research Use Only. Not for diagnostic, therapeutics, prophylactic or in vivo use.