

## DATASHEET

# ALDH1L1 Rabbit Monoclonal Antibody(C1874)

CAT. NO. AMA01486

### KEY FEATURES

Target	ALDH1L1	Source / Host	Rabbit
Reactivity	Human, Mouse, Rat	Clonality	Monoclonal
Applications	WB	Conjugation	Unconjugated
Form / Buffer	Liquid in PBS, pH 7.4, containing 50% glycerol, 0.2% BSA and 0.01% sodium azide.	Storage	at-20°C

### BACKGROUND

Cytosolic 10-formyltetrahydrofolate dehydrogenase that catalyzes the NADP(+)-dependent conversion of 10-formyltetrahydrofolate to tetrahydrofolate and carbon dioxide -dependent conversion of 10-formyltetrahydrofolate to tetrahydrofolate and carbon dioxide . May also have an NADP(+)-dependent aldehyde dehydrogenase activity towards formaldehyde, acetaldehyde, propionaldehyde, and benzaldehyde .

### APPLICATION

To ensure optimal assay performance, AREX recommends conducting reagent titration tailored to each testing system for optimal detection results.

WB	1:500 - 1:1000
----	----------------

\*Results are sample-specific. Please refer to your local assay conditions and test parameters for reference.

### PRODUCT OVERVIEW

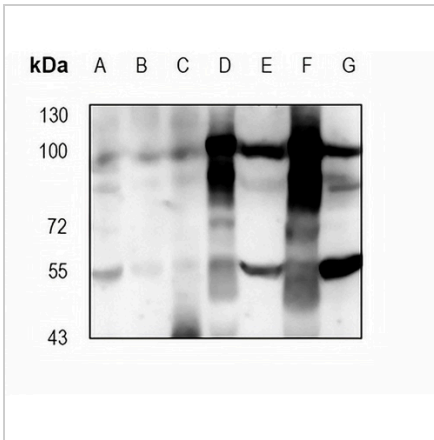
Description	Recombinant rabbit monoclonal antibody to ALDH1L1
Specificity	Recognizes endogenous levels of ALDH1L1 protein
Antibody Type	Primary antibody, Recombinant
Immunogen	KLH-conjugated synthetic peptide encompassing a sequence within human ALDH1L1 protein. The exact sequence is proprietary.
Purification	The antibody was purified by immunogen affinity chromatography.
Molecular Weight	Predicted: 98 kD; Observed: 99 kD
Form/Buffer	Liquid in PBS, pH 7.4, containing 50% glycerol, 0.2% BSA and 0.01% sodium azide.
Alternative Names	FTHFD; Cytosolic 10-formyltetrahydrofolate dehydrogenase; 10-FTHFDH; FDH; Aldehyde dehydrogenase family 1 member L1
Gene Symbol	ALDH1L1
Entrez Gene	10840(Human); 107747(Mouse); 64392(Rat)
SwissProt	O75891(Human); Q8R0Y6(Mouse); P28037(Rat)

\*AREX continuously optimizes our products. Webpage content may not reflect the latest updates. For inquiries, please contact [info@arexbio.com](mailto:info@arexbio.com) or your local distributor.

\*Clone Number, Reactivity, Source/Host and Clonality can be found in the product name and Key Features section above.

**DATASHEET****ALDH1L1 Rabbit Monoclonal Antibody(C1874)**

CAT. NO. AMA01486

**DATA**

Western blot analysis of ALDH1L1 expression in A2780 (A), U87 (B), A375 (C), mouse liver (D), mouse testis (E), rat liver (F), rat brain whole cell lysates. (Predicted band size: 98 kD; Observed band size: 99 kD)

**STORAGE**

Store at 4°C short term. For long term storage, store at -20°C, avoiding freeze/thaw cycles.

**NOTE**

For Research Use Only. Not for diagnostic, therapeutics, prophylactic or in vivo use.