

**DATASHEET**

**TOM22 Rabbit Monoclonal Antibody(C1881)**

CAT. NO. AMA01493

**KEY FEATURES**

Target	TOM22	Source / Host	Rabbit
Reactivity	Human, Mouse, Rat	Clonality	Monoclonal
Applications	WB, IP	Conjugation	Unconjugated
Form / Buffer	Liquid in PBS, pH 7.4, containing 50% glycerol, 0.2% BSA and 0.01% sodium azide.	Storage	at-20°C

**BACKGROUND**

Central receptor component of the translocase of the outer membrane of mitochondria (TOM) complex essential for the recognition and translocation of cytosolically synthesized mitochondrial preproteins complex essential for the recognition and translocation of cytosolically synthesized mitochondrial preproteins . Together with the peripheral receptor TOMM20, functions as the transit peptide receptor and facilitates the movement of preproteins into the translocation pore . The TOM complex associates with the ion channel VDAC2 and PINK1 kinase at depolarized mitochondria, this interaction stabilizes PINK1 at the outer mitochondrial membrane and triggers downstream mitophagy by the recruitment of the E3 ubiquitin ligase PRKN .

**APPLICATION**

To ensure optimal assay performance, AREX recommends conducting reagent titration tailored to each testing system for optimal detection results.

WB	1:500 - 1:1000
IP	1:10 - 1:50

\*Results are sample-specific. Please refer to your local assay conditions and test parameters for reference.

**PRODUCT OVERVIEW**

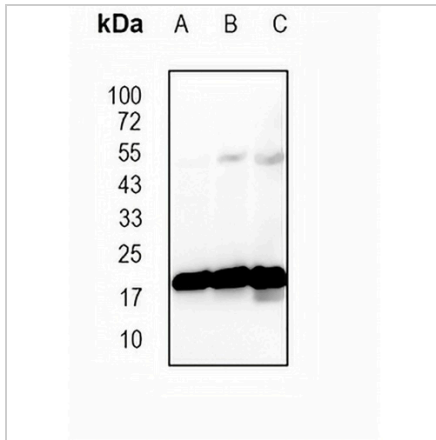
Description	Recombinant rabbit monoclonal antibody to TOM22
Specificity	Recognizes endogenous levels of TOM22 protein
Antibody Type	Primary antibody, Recombinant
Immunogen	KLH-conjugated synthetic peptide encompassing a sequence within human TOM22 protein. The exact sequence is proprietary.
Purification	The antibody was purified by immunogen affinity chromatography.
Molecular Weight	Predicted: 15 kD; Observed: 18 kD
Form/Buffer	Liquid in PBS, pH 7.4, containing 50% glycerol, 0.2% BSA and 0.01% sodium azide.
Alternative Names	TOM22; Mitochondrial import receptor subunit TOM22 homolog; hTom22; 1C9-2; Translocase of outer membrane 22 kDa subunit homolog
Gene Symbol	TOMM22
Entrez Gene	56993(Human); 223696(Mouse); 300075(Rat)
SwissProt	Q9NS69(Human); Q9CPQ3(Mouse); Q75Q41(Rat)

\*AREX continuously optimizes our products. Webpage content may not reflect the latest updates. For inquiries, please contact [info@arexbio.com](mailto:info@arexbio.com) or your local distributor.

\*Clone Number, Reactivity, Source/Host and Clonality can be found in the product name and Key Features section above.

**DATASHEET****TOM22 Rabbit Monoclonal Antibody(C1881)**

CAT. NO. AMA01493

**DATA**

Western blot analysis of TOM22 expression in mouse spleen (A), rat lung (B), rat spleen (C) whole cell lysates. (Predicted band size: 15 kD; Observed band size: 18 kD)

**STORAGE**

Store at 4°C short term. For long term storage, store at -20°C, avoiding freeze/thaw cycles.

**NOTE**

For Research Use Only. Not for diagnostic, therapeutics, prophylactic or in vivo use.