

## DATASHEET

# HLTF Rabbit Monoclonal Antibody(C1886)

CAT. NO. AMA01498

### KEY FEATURES

Target	HLTF	Source / Host	Rabbit
Reactivity	Human	Clonality	Monoclonal
Applications	WB	Conjugation	Unconjugated
Form / Buffer	Liquid in PBS, pH 7.4, containing 50% glycerol, 0.2% BSA and 0.01% sodium azide.	Storage	at-20°C

### BACKGROUND

Functions as a DNA-dependent ATPase and E3 ubiquitin-protein ligase involved in chromatin regulation and DNA damage tolerance (DDT) . Catalyzes 'Lys-63'-linked polyubiquitination of monoubiquitinated PCNA at 'Lys-164' in response to genotoxic stress, promoting error-free postreplication repair via template switching . Acts as an epigenetic regulator by promoting recruitment of DNMT1, thereby ensuring DNA methylation inheritance: specifically binds histone H3 trimethylated at 'Lys-9' (H3K9me3) and mediates histone H3 'Lys-23' polyubiquitination (H3K23ub), a docking site for DNMT1, leading to DNMT1 recruitment and replication-coupled DNA methylation maintenance .

### APPLICATION

To ensure optimal assay performance, AREX recommends conducting reagent titration tailored to each testing system for optimal detection results.

WB	1:500 - 1:1000
----	----------------

\*Results are sample-specific. Please refer to your local assay conditions and test parameters for reference.

### PRODUCT OVERVIEW

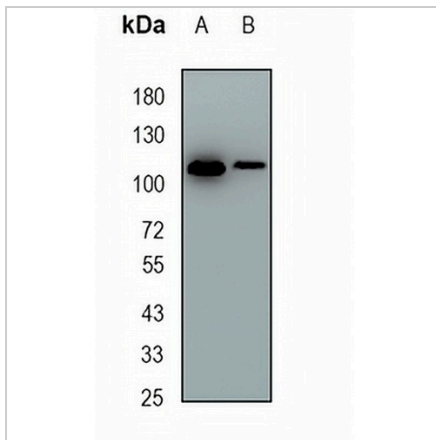
Description	Recombinant rabbit monoclonal antibody to HLTF
Specificity	Recognizes endogenous levels of HLTF protein
Antibody Type	Primary antibody, Recombinant
Immunogen	KLH-conjugated synthetic peptide encompassing a sequence within human HLTF protein. The exact sequence is proprietary.
Purification	The antibody was purified by immunogen affinity chromatography.
Molecular Weight	Predicted: 113 kD; Observed: 113 kD
Form/Buffer	Liquid in PBS, pH 7.4, containing 50% glycerol, 0.2% BSA and 0.01% sodium azide.
Alternative Names	HIP116A; RNF80; SMARCA3; SNF2L3; ZBU1; Helicase-like transcription factor; DNA-binding protein/plasminogen activator inhibitor 1 regulator; HIP116; RING finger protein 80; SWI/SNF-related matrix-associated actin-dependent regulator of chromatin subfamily A member 3; Sucrose nonfermenting protein 2-like 3
Gene Symbol	HLTF
Entrez Gene	6596(Human)
SwissProt	Q14527(Human)

\*AREX continuously optimizes our products. Webpage content may not reflect the latest updates. For inquiries, please contact [info@arexbio.com](mailto:info@arexbio.com) or your local distributor.

\*Clone Number, Reactivity, Source/Host and Clonality can be found in the product name and Key Features section above.

**DATASHEET****HLTF Rabbit Monoclonal Antibody(C1886)**

CAT. NO. AMA01498

**DATA**

Western blot analysis of HLTF expression in HEK293T (A), MDAMB231 (B) whole cell lysates. (Predicted band size: 113 kD; Observed band size: 113 kD)

**STORAGE**

Store at 4°C short term. For long term storage, store at -20°C, avoiding freeze/thaw cycles.

**NOTE**

For Research Use Only. Not for diagnostic, therapeutics, prophylactic or in vivo use.