

**DATASHEET**

**PKC theta Rabbit Monoclonal Antibody(C1887)**

CAT. NO. AMA01499

**KEY FEATURES**

|               |  |               |              |
|---------------|--|---------------|--------------|
| Target        | PKC theta  | Source / Host | Rabbit       |
| Reactivity    | Human, Mouse, Rat  | Clonality     | Monoclonal   |
| Applications  | WB   | Conjugation   | Unconjugated |
| Form / Buffer | Liquid in PBS, pH 7.4, containing 50% glycerol, 0.2% BSA and 0.01% sodium azide. | Storage       | at-20°C      |

**BACKGROUND**

Calcium-independent, phospholipid- and diacylglycerol (DAG)-dependent serine/threonine-protein kinase that mediates non-redundant functions in T-cell receptor (TCR) signaling, including T-cells activation, proliferation, differentiation and survival, by mediating activation of multiple transcription factors such as NF-kappa-B, JUN, NFATC1 and NFATC2.

**APPLICATION**

To ensure optimal assay performance, AREX recommends conducting reagent titration tailored to each testing system for optimal detection results.

|    |                |
|----|----------------|
| WB | 1:500 - 1:1000 |
|----|----------------|

\*Results are sample-specific. Please refer to your local assay conditions and test parameters for reference.

**PRODUCT OVERVIEW**

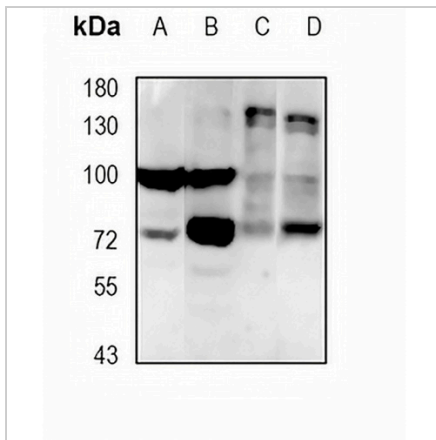
|                   |   |
|-------------------|---|
| Description       | Recombinant rabbit monoclonal antibody to PKC theta   |
| Specificity       | Recognizes endogenous levels of PKC theta protein   |
| Antibody Type     | Primary antibody, Recombinant   |
| Immunogen         | KLH-conjugated synthetic peptide encompassing a sequence within human PKC theta protein. The exact sequence is proprietary. |
| Purification      | The antibody was purified by immunogen affinity chromatography.   |
| Molecular Weight  | Predicted: 81 kD; Observed: 78 kD   |
| Form/Buffer       | Liquid in PBS, pH 7.4, containing 50% glycerol, 0.2% BSA and 0.01% sodium azide.  |
| Alternative Names | PRKCT; Protein kinase C theta type; nPKC-theta  |
| Gene Symbol       | PRKCQ   |
| Entrez Gene       | 5588(Human); 18761(Mouse)   |
| SwissProt         | Q04759(Human); Q02111(Mouse); Q9WTQ0(Rat)   |

\*AREX continuously optimizes our products. Webpage content may not reflect the latest updates. For inquiries, please contact [info@arexbio.com](mailto:info@arexbio.com) or your local distributor.

\*Clone Number, Reactivity, Source/Host and Clonality can be found in the product name and Key Features section above.

**DATASHEET****PKC theta Rabbit Monoclonal Antibody(C1887)**

CAT. NO. AMA01499

**DATA**

Western blot analysis of PKC theta expression in A2780 (A), A375 (B), mouse brain (C), rat brain (D) whole cell lysates. (Predicted band size: 81 kD; Observed band size: 78 kD)

**STORAGE**

Store at 4°C short term. For long term storage, store at -20°C, avoiding freeze/thaw cycles.

**NOTE**

For Research Use Only. Not for diagnostic, therapeutics, prophylactic or in vivo use.