

## DATASHEET

# GLUR4 Rabbit Monoclonal Antibody(C1892)

CAT. NO. AMA01504

### KEY FEATURES

Target	GLUR4	Source / Host	Rabbit
Reactivity	Human, Mouse, Rat	Clonality	Monoclonal
Applications	WB	Conjugation	Unconjugated
Form / Buffer	Liquid in PBS, pH 7.4, containing 50% glycerol, 0.2% BSA and 0.01% sodium azide.	Storage	at-20°C

### BACKGROUND

Ionotropic glutamate receptor that functions as a ligand-gated cation channel, gated by L-glutamate and glutamatergic agonists such as alpha-amino-3-hydroxy-5-methyl-4-isoxazolepropionic acid (AMPA), quisqualic acid, and kainic acid . L-glutamate acts as an excitatory neurotransmitter at many synapses in the central nervous system and plays an important role in fast excitatory synaptic transmission . Binding of the excitatory neurotransmitter L-glutamate induces a conformation change, leading to the opening of the cation channel, and thereby converts the chemical signal to an electrical impulse upon entry of monovalent and divalent cations such as sodium and calcium.

### APPLICATION

To ensure optimal assay performance, AREX recommends conducting reagent titration tailored to each testing system for optimal detection results.

WB	1:500 - 1:1000
----	----------------

\*Results are sample-specific. Please refer to your local assay conditions and test parameters for reference.

### PRODUCT OVERVIEW

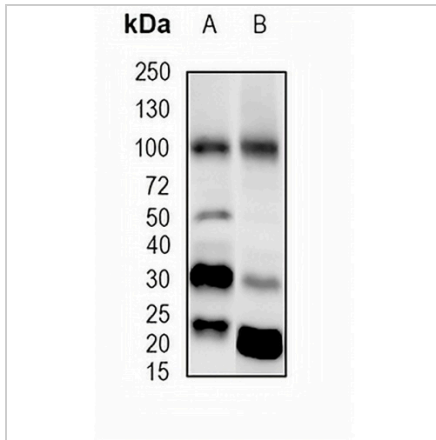
Description	Recombinant rabbit monoclonal antibody to GLUR4
Specificity	Recognizes endogenous levels of GLUR4 protein
Antibody Type	Primary antibody, Recombinant
Immunogen	KLH-conjugated synthetic peptide encompassing a sequence within human GLUR4 protein. The exact sequence is proprietary.
Purification	The antibody was purified by immunogen affinity chromatography.
Molecular Weight	Predicted: 100 kD; Observed: 101 kD
Form/Buffer	Liquid in PBS, pH 7.4, containing 50% glycerol, 0.2% BSA and 0.01% sodium azide.
Alternative Names	GLUR4; Glutamate receptor 4; GluR-4; GluR4; AMPA-selective glutamate receptor 4; GluR-D; Glutamate receptor ionotropic, AMPA 4; GluA4
Gene Symbol	GRIA4
Entrez Gene	2893(Human); 14802(Mouse); 29629(Rat)
SwissProt	P48058(Human); Q9Z2W8(Mouse); P19493(Rat)

\*AREX continuously optimizes our products. Webpage content may not reflect the latest updates. For inquiries, please contact [info@arexbio.com](mailto:info@arexbio.com) or your local distributor.

\*Clone Number, Reactivity, Source/Host and Clonality can be found in the product name and Key Features section above.

**DATASHEET****GLUR4 Rabbit Monoclonal Antibody(C1892)**

CAT. NO. AMA01504

**DATA**

Western blot analysis of GLUR4 expression in mouse brain (A), rat brain (B) whole cell lysates. (Predicted band size: 100 kD; Observed band size: 101 kD)

**STORAGE**

Store at 4°C short term. For long term storage, store at -20°C, avoiding freeze/thaw cycles.

**NOTE**

For Research Use Only. Not for diagnostic, therapeutics, prophylactic or in vivo use.