

DATASHEET

EN1 Rabbit Monoclonal Antibody(C1896)

CAT. NO. AMA01508

KEY FEATURES

Target	EN1	Source / Host	Rabbit
Reactivity	Human, Mouse, Rat	Clonality	Monoclonal
Applications	WB, IP	Conjugation	Unconjugated
Form / Buffer	Liquid in PBS, pH 7.4, containing 50% glycerol, 0.2% BSA and 0.01% sodium azide.	Storage	at-20°C

BACKGROUND

Required for proper formation of the apical ectodermal ridge and correct dorsal-ventral patterning in the limb.

APPLICATION

To ensure optimal assay performance, AREX recommends conducting reagent titration tailored to each testing system for optimal detection results.

WB	1:500 - 1:1000
IP	1:10 - 1:50

*Results are sample-specific. Please refer to your local assay conditions and test parameters for reference.

PRODUCT OVERVIEW

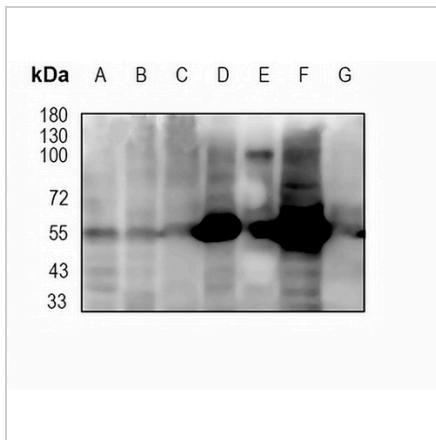
Description	Recombinant rabbit monoclonal antibody to EN1
Specificity	Recognizes endogenous levels of EN1 protein
Antibody Type	Primary antibody, Recombinant
Immunogen	KLH-conjugated synthetic peptide encompassing a sequence within human EN1 protein. The exact sequence is proprietary.
Purification	The antibody was purified by immunogen affinity chromatography.
Molecular Weight	Predicted: 40 kD; Observed: 55 kD
Form/Buffer	Liquid in PBS, pH 7.4, containing 50% glycerol, 0.2% BSA and 0.01% sodium azide.
Alternative Names	Homeobox protein engrailed-1; Homeobox protein en-1; Hu-En-1
Gene Symbol	EN1
Entrez Gene	2019(Human); 13798(Mouse)
SwissProt	Q05925(Human); P09065(Mouse)

*AREX continuously optimizes our products. Webpage content may not reflect the latest updates. For inquiries, please contact info@arexbio.com or your local distributor.

*Clone Number, Reactivity, Source/Host and Clonality can be found in the product name and Key Features section above.

DATASHEET**EN1 Rabbit Monoclonal Antibody(C1896)**

CAT. NO. AMA01508

DATA

Western blot analysis of EN1 expression in Hela (A), A2780 (B), A375 (C), mouse brain (D), mouse muscle (E), rat brain (F), rat muscle whole cell lysates. (Predicted band size: 40 kD; Observed band size: 55 kD)

STORAGE

Store at 4°C short term. For long term storage, store at -20°C, avoiding freeze/thaw cycles.

NOTE

For Research Use Only. Not for diagnostic, therapeutics, prophylactic or in vivo use.