

**DATASHEET**

**SEN1 Rabbit Monoclonal Antibody(C1900)**

CAT. NO. AMA01512

**KEY FEATURES**

Target	SEN1	Source / Host	Rabbit
Reactivity	Human, Mouse	Clonality	Monoclonal
Applications	WB	Conjugation	Unconjugated
Form / Buffer	Liquid in PBS, pH 7.4, containing 50% glycerol, 0.2% BSA and 0.01% sodium azide.	Storage	at-20°C

**BACKGROUND**

Protease that catalyzes two essential functions in the SUMO pathway . The first is the hydrolysis of an alpha-linked peptide bond at the C-terminal end of the small ubiquitin-like modifier (SUMO) propeptides, SUMO1, SUMO2 and SUMO3 leading to the mature form of the proteins . The second is the deconjugation of SUMO1, SUMO2 and SUMO3 from targeted proteins, by cleaving an epsilon-linked peptide bond between the C-terminal glycine of the mature SUMO and the lysine epsilon-amino group of the target protein . Deconjugates SUMO1 from HIPK2 . Deconjugates SUMO1 from HDAC1 and BHLHE40/DEC1, which decreases its transcriptional repression activity . Deconjugates SUMO1 from CLOCK, which decreases its transcriptional activation activity . Deconjugates SUMO2 from MTA1 .

**APPLICATION**

To ensure optimal assay performance, AREX recommends conducting reagent titration tailored to each testing system for optimal detection results.

WB	1:500 - 1:1000
----	----------------

\*Results are sample-specific. Please refer to your local assay conditions and test parameters for reference.

**PRODUCT OVERVIEW**

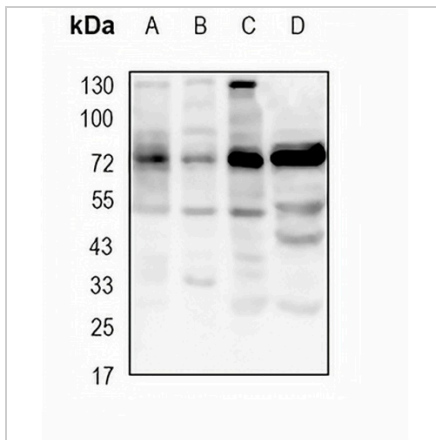
Description	Recombinant rabbit monoclonal antibody to SEN1
Specificity	Recognizes endogenous levels of SEN1 protein
Antibody Type	Primary antibody, Recombinant
Immunogen	KLH-conjugated synthetic peptide encompassing a sequence within human SEN1 protein. The exact sequence is proprietary.
Purification	The antibody was purified by immunogen affinity chromatography.
Molecular Weight	Predicted: 73 kD; Observed: 73 kD
Form/Buffer	Liquid in PBS, pH 7.4, containing 50% glycerol, 0.2% BSA and 0.01% sodium azide.
Alternative Names	Sentrin-specific protease 1; Sentrin/SUMO-specific protease SEN1
Gene Symbol	SEN1
Entrez Gene	29843(Human); 223870(Mouse)
SwissProt	Q9POU3(Human); P59110(Mouse)

\*AREX continuously optimizes our products. Webpage content may not reflect the latest updates. For inquiries, please contact [info@arexbio.com](mailto:info@arexbio.com) or your local distributor.

\*Clone Number, Reactivity, Source/Host and Clonality can be found in the product name and Key Features section above.

**DATASHEET****SEN1 Rabbit Monoclonal Antibody(C1900)**

CAT. NO. AMA01512

**DATA**

Western blot analysis of SEN1 expression in A2780 (A), U87 (B), A375 (C), mouse testis (D) whole cell lysates. (Predicted band size: 73 kD; Observed band size: 73 kD)

**STORAGE**

Store at 4°C short term. For long term storage, store at -20°C, avoiding freeze/thaw cycles.

**NOTE**

For Research Use Only. Not for diagnostic, therapeutics, prophylactic or in vivo use.