

DATASHEET

Napsin A Rabbit Monoclonal Antibody(C1917)

CAT. NO. AMA01529

KEY FEATURES

Target	Napsin A	Source / Host	Rabbit
Reactivity	Human, Mouse	Clonality	Monoclonal
Applications	WB, IP	Conjugation	Unconjugated
Form / Buffer	Liquid in PBS, pH 7.4, containing 50% glycerol, 0.2% BSA and 0.01% sodium azide.	Storage	at-20°C

BACKGROUND

May be involved in processing of pneumocyte surfactant precursors.

APPLICATION

To ensure optimal assay performance, AREX recommends conducting reagent titration tailored to each testing system for optimal detection results.

WB	1:500 - 1:1000
IP	1:10 - 1:50

*Results are sample-specific. Please refer to your local assay conditions and test parameters for reference.

PRODUCT OVERVIEW

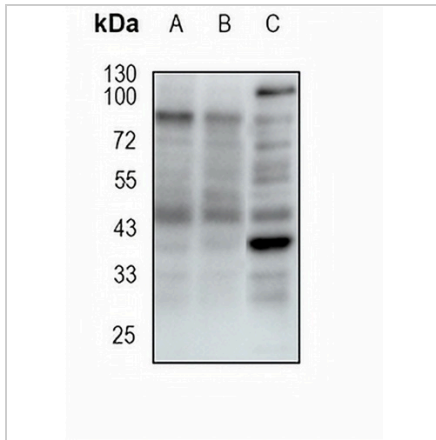
Description	Recombinant rabbit monoclonal antibody to Napsin A
Specificity	Recognizes endogenous levels of Napsin A protein
Antibody Type	Primary antibody, Recombinant
Immunogen	KLH-conjugated synthetic peptide encompassing a sequence within human Napsin A protein. The exact sequence is proprietary.
Purification	The antibody was purified by immunogen affinity chromatography.
Molecular Weight	Predicted: 45 kD; Observed: 45 kD
Form/Buffer	Liquid in PBS, pH 7.4, containing 50% glycerol, 0.2% BSA and 0.01% sodium azide.
Alternative Names	NAP1; NAPA; Napsin-A; Aspartyl protease 4; ASP4; Asp 4; Napsin-1; TA01/TA02
Gene Symbol	NAPSA
Entrez Gene	9476(Human); 16541(Mouse)
SwissProt	O96009(Human); O09043(Mouse)

*AREX continuously optimizes our products. Webpage content may not reflect the latest updates. For inquiries, please contact info@arexbio.com or your local distributor.

*Clone Number, Reactivity, Source/Host and Clonality can be found in the product name and Key Features section above.

DATASHEET**Napsin A Rabbit Monoclonal Antibody(C1917)**

CAT. NO. AMA01529

DATA

Western blot analysis of Napsin A expression in mouse liver (A), mouse kidney (B), HEK293T (C) whole cell lysates. (Predicted band size: 45 kD; Observed band size: 45 kD)

STORAGE

Store at 4°C short term. For long term storage, store at -20°C, avoiding freeze/thaw cycles.

NOTE

For Research Use Only. Not for diagnostic, therapeutics, prophylactic or in vivo use.