

DATASHEET

ERR gamma Rabbit Monoclonal Antibody(C1928)

CAT. NO. AMA01540

KEY FEATURES

Target	ERR gamma	Source / Host	Rabbit
Reactivity	Human, Mouse, Rat	Clonality	Monoclonal
Applications	WB	Conjugation	Unconjugated
Form / Buffer	Liquid in PBS, pH 7.4, containing 50% glycerol, 0.2% BSA and 0.01% sodium azide.	Storage	at-20°C

BACKGROUND

Orphan receptor that acts as a transcription activator in the absence of bound ligand. Binds specifically to an estrogen response element and activates reporter genes controlled by estrogen response elements . Induces the expression of PERM1 in the skeletal muscle.

APPLICATION

To ensure optimal assay performance, AREX recommends conducting reagent titration tailored to each testing system for optimal detection results.

WB	1:500 - 1:1000
----	----------------

*Results are sample-specific. Please refer to your local assay conditions and test parameters for reference.

PRODUCT OVERVIEW

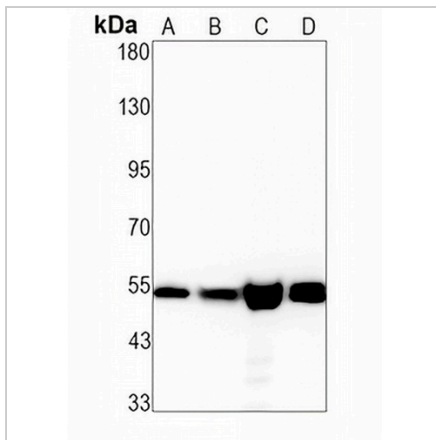
Description	Recombinant rabbit monoclonal antibody to ERR gamma
Specificity	Recognizes endogenous levels of ERR gamma protein
Antibody Type	Primary antibody, Recombinant
Immunogen	KLH-conjugated synthetic peptide encompassing a sequence within human ERR gamma protein. The exact sequence is proprietary.
Purification	The antibody was purified by immunogen affinity chromatography.
Molecular Weight	Predicted: 51 kD; Observed: 51 kD
Form/Buffer	Liquid in PBS, pH 7.4, containing 50% glycerol, 0.2% BSA and 0.01% sodium azide.
Alternative Names	ERR3; ERG2; KIAA0832; NR3B3; Estrogen-related receptor gamma; ERR gamma-2; Estrogen receptor-related protein 3; Nuclear receptor subfamily 3 group B member 3
Gene Symbol	ESRRG
Entrez Gene	2104(Human); 26381(Mouse); 360896(Rat)
SwissProt	P62508(Human); P62509(Mouse); P62510(Rat)

*AREX continuously optimizes our products. Webpage content may not reflect the latest updates. For inquiries, please contact info@arexbio.com or your local distributor.

*Clone Number, Reactivity, Source/Host and Clonality can be found in the product name and Key Features section above.

DATASHEET**ERR gamma Rabbit Monoclonal Antibody(C1928)**

CAT. NO. AMA01540

DATA

Western blot analysis of ERR gamma expression in mouse kidney (A), mouse muscle (B), rat lung (C), rat muscle (D) whole cell lysates. (Predicted band size: 51 kD; Observed band size: 51 kD)

STORAGE

Store at 4°C short term. For long term storage, store at -20°C, avoiding freeze/thaw cycles.

NOTE

For Research Use Only. Not for diagnostic, therapeutics, prophylactic or in vivo use.