

DATASHEET

CCT alpha Rabbit Monoclonal Antibody(C1938)

CAT. NO. AMA01550

KEY FEATURES

Target	CCT alpha	Source / Host	Rabbit
Reactivity	Human, Mouse, Rat	Clonality	Monoclonal
Applications	WB	Conjugation	Unconjugated
Form / Buffer	Liquid in PBS, pH 7.4, containing 50% glycerol, 0.2% BSA and 0.01% sodium azide.	Storage	at-20°C

BACKGROUND

Catalyzes the key rate-limiting step in the CDP-choline pathway for phosphatidylcholine biosynthesis.

APPLICATION

To ensure optimal assay performance, AREX recommends conducting reagent titration tailored to each testing system for optimal detection results.

WB	1:500 - 1:1000
----	----------------

*Results are sample-specific. Please refer to your local assay conditions and test parameters for reference.

PRODUCT OVERVIEW

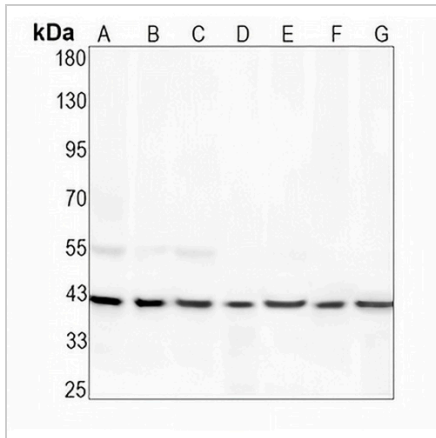
Description	Recombinant rabbit monoclonal antibody to CCT alpha
Specificity	Recognizes endogenous levels of CCT alpha protein
Antibody Type	Primary antibody, Recombinant
Immunogen	KLH-conjugated synthetic peptide encompassing a sequence within human CCT alpha protein. The exact sequence is proprietary.
Purification	The antibody was purified by immunogen affinity chromatography.
Molecular Weight	Predicted: 41 kD; Observed: 42 kD
Form/Buffer	Liquid in PBS, pH 7.4, containing 50% glycerol, 0.2% BSA and 0.01% sodium azide.
Alternative Names	CTPCT; PCYT1; Choline-phosphate cytidyltransferase A; CCT-alpha; CTP:phosphocholine cytidyltransferase A; CCT A; CT A; Phosphorylcholine transferase A
Gene Symbol	PCYT1A
Entrez Gene	5130(Human); 13026(Mouse); 140544(Rat)
SwissProt	P49585(Human); P49586(Mouse); P19836(Rat)

*AREX continuously optimizes our products. Webpage content may not reflect the latest updates. For inquiries, please contact info@arexbio.com or your local distributor.

*Clone Number, Reactivity, Source/Host and Clonality can be found in the product name and Key Features section above.

DATASHEET**CCT alpha Rabbit Monoclonal Antibody(C1938)**

CAT. NO. AMA01550

DATA

Western blot analysis of CCT alpha expression in HepG2 (A), A2780 (B), A375 (C), mouse liver (D), rat liver (E) whole cell lysates. (Predicted band size: 41 kD; Observed band size: 42 kD)

STORAGE

Store at 4°C short term. For long term storage, store at -20°C, avoiding freeze/thaw cycles.

NOTE

For Research Use Only. Not for diagnostic, therapeutics, prophylactic or in vivo use.