

## DATASHEET

# ARF5 Rabbit Monoclonal Antibody(C1946)

CAT. NO. AMA01558

### KEY FEATURES

Target	ARF5	Source / Host	Rabbit
Reactivity	Human, Mouse, Rat	Clonality	Monoclonal
Applications	WB	Conjugation	Unconjugated
Form / Buffer	Liquid in PBS, pH 7.4, containing 50% glycerol, 0.2% BSA and 0.01% sodium azide.	Storage	at-20°C

### BACKGROUND

GTP-binding protein involved in protein trafficking; may modulate vesicle budding and uncoating within the Golgi apparatus.

### APPLICATION

To ensure optimal assay performance, AREX recommends conducting reagent titration tailored to each testing system for optimal detection results.

WB	1:500 - 1:1000
----	----------------

\*Results are sample-specific. Please refer to your local assay conditions and test parameters for reference.

### PRODUCT OVERVIEW

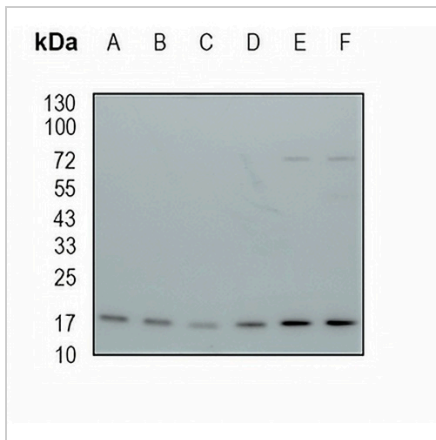
Description	Recombinant rabbit monoclonal antibody to ARF5
Specificity	Recognizes endogenous levels of ARF5 protein
Antibody Type	Primary antibody, Recombinant
Immunogen	KLH-conjugated synthetic peptide encompassing a sequence within human ARF5 protein. The exact sequence is proprietary.
Purification	The antibody was purified by immunogen affinity chromatography.
Molecular Weight	Predicted: 20 kD; Observed: 18 kD
Form/Buffer	Liquid in PBS, pH 7.4, containing 50% glycerol, 0.2% BSA and 0.01% sodium azide.
Alternative Names	ADP-ribosylation factor 5
Gene Symbol	ARF5
Entrez Gene	381(Human); 11844(Mouse); 79117(Rat)
SwissProt	P84085(Human); P84084(Mouse); P84083(Rat)

\*AREX continuously optimizes our products. Webpage content may not reflect the latest updates. For inquiries, please contact [info@arexbio.com](mailto:info@arexbio.com) or your local distributor.

\*Clone Number, Reactivity, Source/Host and Clonality can be found in the product name and Key Features section above.

**DATASHEET****ARF5 Rabbit Monoclonal Antibody(C1946)**

CAT. NO. AMA01558

**DATA**

Western blot analysis of ARF5 expression in mouse liver (A), mouse kidney (B), rat kidney (C), rat brain (D), HEK293T (E), MDAMB231 (F) whole cell lysates. (Predicted band size: 20 kD; Observed band size: 18 kD)

**STORAGE**

Store at 4°C short term. For long term storage, store at -20°C, avoiding freeze/thaw cycles.

**NOTE**

For Research Use Only. Not for diagnostic, therapeutics, prophylactic or in vivo use.