

DATASHEET

Ly6g Rabbit Monoclonal Antibody(C1960)

CAT. NO. AMA01572

KEY FEATURES

Target	Ly6g	Source / Host	Rabbit
Reactivity	Mouse	Clonality	Monoclonal
Applications	WB, IHC, IF/ICC, IP	Conjugation	Unconjugated
Form / Buffer	Liquid in PBS, pH 7.3, 50% glycerol, 0.05% BSA, and 0.05% Proclin300.	Storage	at-20°C

BACKGROUND

LY6G6D belongs to a cluster of leukocyte antigen-6 (LY6) genes located in the major histocompatibility complex (MHC) class III region on chromosome 6. Members of the LY6 superfamily typically contain 70 to 80 amino acids, including 8 to 10 cysteines. Most LY6 proteins are attached to the cell surface by a glycosylphosphatidylinositol (GPI) anchor that is directly involved in signal transduction (Mallya et al., 2002 [PubMed 12079290]).

APPLICATION

To ensure optimal assay performance, AREX recommends conducting reagent titration tailored to each testing system for optimal detection results.

WB	1:500 - 1:2000
IHC	1:100 - 1:300
IF/ICC	1:100 - 1:300
IP	1:50 - 1:100

*Results are sample-specific. Please refer to your local assay conditions and test parameters for reference.

PRODUCT OVERVIEW

Description	Recombinant rabbit monoclonal antibody to Ly6g
Specificity	Recognizes endogenous levels of Ly6g protein
Antibody Type	Primary antibody, Recombinant
Immunogen	Recombinant fusion protein of mouse Ly6g. The exact sequence is proprietary.
Purification	The antibody was purified by immunogen affinity chromatography.
Molecular Weight	Predicted: 14 kD; Observed: 14, 35 kD
Form/Buffer	Liquid in PBS, pH 7.3, 50% glycerol, 0.05% BSA, and 0.05% Proclin300.
Alternative Names	Lymphocyte antigen 6G; Ly-6G; Ly-6G.1
Gene Symbol	Ly6g
Entrez Gene	546644(Mouse)
SwissProt	P35461(Mouse)

*AREX continuously optimizes our products. Webpage content may not reflect the latest updates. For inquiries, please contact info@arexbio.com or your local distributor.

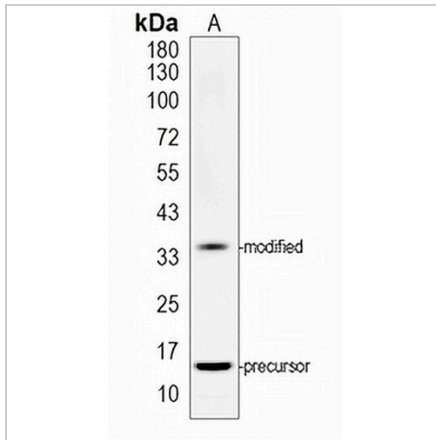
*Clone Number, Reactivity, Source/Host and Clonality can be found in the product name and Key Features section above.

DATASHEET

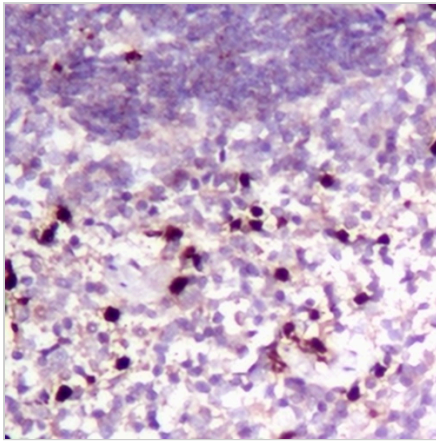
Ly6g Rabbit Monoclonal Antibody(C1960)

CAT. NO. AMA01572

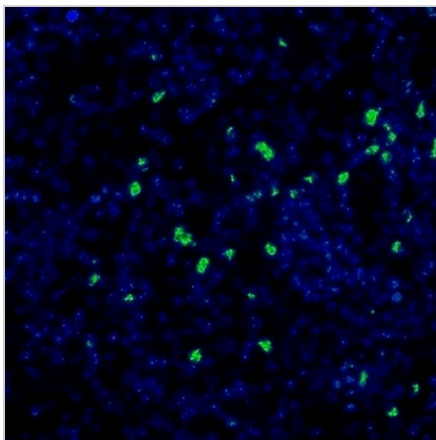
DATA



Western blot analysis of Ly6g expression in mouse kidney (A) whole cell lysates. (Predicted band size: 14 kD; Observed band size: 14, 35 kD)



Immunohistochemical analysis of Ly6g staining in mouse spleen formalin fixed paraffin embedded tissue section. The section was pre-treated using heat mediated antigen retrieval with TE buffer (pH 9.0). The section was then incubated with the antibody at room temperature and detected using an HRP conjugated compact polymer system. DAB was used as the chromogen. The section was then counterstained with haematoxylin and mounted with DPX.



Immunofluorescent analysis of Ly6g staining in mouse spleen formalin fixed paraffin embedded tissue section. The section was pre-treated using heat mediated antigen retrieval with TE buffer (pH 9.0). The section was then incubated with the antibody at room temperature, and use an AREX® Fluor 488 -conjugated secondary antibody (green) in PBS at room temperature in the dark.

STORAGE

Store at 4°C short term. For long term storage, store at -20°C, avoiding freeze/thaw cycles.

NOTE

For Research Use Only. Not for diagnostic, therapeutics, prophylactic or in vivo use.