

DATASHEET

BTNL3 Rabbit Monoclonal Antibody(C1977)

CAT. NO. AMA01589

KEY FEATURES

Target	BTNL3	Source / Host	Rabbit
Reactivity	Human	Clonality	Monoclonal
Applications	WB, FC	Conjugation	Unconjugated
Form / Buffer	Liquid in PBS, pH 7.3, 50% glycerol, 0.05% BSA, and 0.05% Proclin300.	Storage	at-20°C

BACKGROUND

Butyrophilin-like protein 3 (BTNL3), also known as Butyrophilin-like receptor. Belongs to the immunoglobulin superfamily. BTN/MOG family Subcellular location: Membrane Tissue specificity: Expressed in small intestine, colon, testis, spleen, and leukocyte

APPLICATION

To ensure optimal assay performance, AREX recommends conducting reagent titration tailored to each testing system for optimal detection results.

WB	1:500 - 1:1000
FC	1:50 - 1:100

*Results are sample-specific. Please refer to your local assay conditions and test parameters for reference.

PRODUCT OVERVIEW

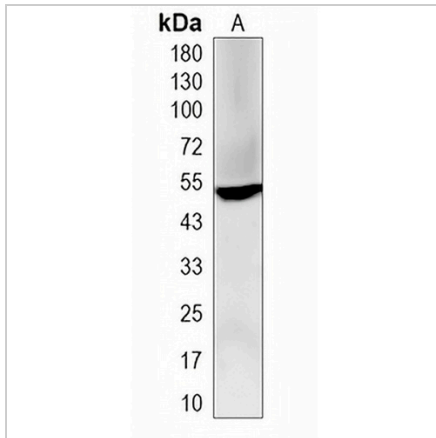
Description	Recombinant rabbit monoclonal antibody to BTNL3
Specificity	Recognizes endogenous levels of BTNL3 protein
Antibody Type	Primary antibody, Recombinant
Immunogen	Recombinant fusion protein of human BTNL3. The exact sequence is proprietary.
Purification	The antibody was purified by immunogen affinity chromatography.
Molecular Weight	Predicted: 52 kD; Observed: 51 kD
Form/Buffer	Liquid in PBS, pH 7.3, 50% glycerol, 0.05% BSA, and 0.05% Proclin300.
Alternative Names	BTNLR; COLF4100; Butyrophilin-like protein 3; Butyrophilin-like receptor
Gene Symbol	BTNL3
Entrez Gene	10917(Human)
SwissProt	Q6UXE8(Human)

*AREX continuously optimizes our products. Webpage content may not reflect the latest updates. For inquiries, please contact info@arexbio.com or your local distributor.

*Clone Number, Reactivity, Source/Host and Clonality can be found in the product name and Key Features section above.

DATASHEET**BTNL3 Rabbit Monoclonal Antibody(C1977)**

CAT. NO. AMA01589

DATA

Western blot analysis of BTNL3 expression in HeLa (A) whole cell lysates. (Predicted band size: 52 kD; Observed band size: 51 kD)

STORAGE

Store at 4°C short term. For long term storage, store at -20°C, avoiding freeze/thaw cycles.

NOTE

For Research Use Only. Not for diagnostic, therapeutics, prophylactic or in vivo use.