

DATASHEET

PTDSS2 Rabbit Monoclonal Antibody(C1980)

CAT. NO. AMA01592

KEY FEATURES

Target	PTDSS2	Source / Host	Rabbit
Reactivity	Human	Clonality	Monoclonal
Applications	WB, IP, FC	Conjugation	Unconjugated
Form / Buffer	Liquid in PBS, pH 7.3, 50% glycerol, 0.05% BSA, and 0.05% Proclin300.	Storage	at-20°C

BACKGROUND

Catalyzes a base-exchange reaction in which the polar head group of phosphatidylethanolamine (PE) or phosphatidylcholine (PC) is replaced by L-serine or phosphatidylcholine (PC) is replaced by L-serine . Catalyzes the conversion of phosphatidylethanolamine and does not act on phosphatidylcholine . Can utilize both phosphatidylethanolamine (PE) plasmalogen and diacyl PE as substrate and the latter is six times better utilized, indicating the importance of an ester linkage at the sn-1 position . Although it shows no sn-1 fatty acyl preference, exhibits significant preference towards docosahexaenoic acid (22:6n-3) compared with 18:1 or 20:4 at the sn-2 position .

APPLICATION

To ensure optimal assay performance, AREX recommends conducting reagent titration tailored to each testing system for optimal detection results.

WB	1:500 - 1:1000
IP	1:10 - 1:50
FC	1:50 - 1:100

*Results are sample-specific. Please refer to your local assay conditions and test parameters for reference.

PRODUCT OVERVIEW

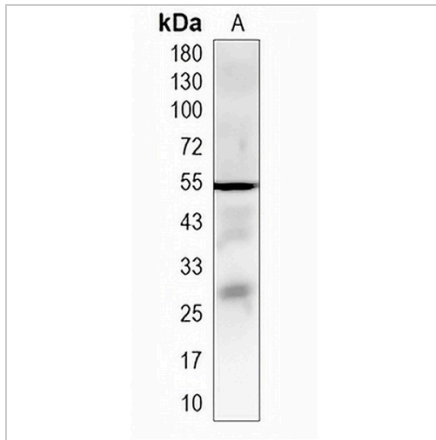
Description	Recombinant rabbit monoclonal antibody to PTDSS2
Specificity	Recognizes endogenous levels of PTDSS2 protein
Antibody Type	Primary antibody, Recombinant
Immunogen	Recombinant fusion protein of human PTDSS2. The exact sequence is proprietary.
Purification	The antibody was purified by immunogen affinity chromatography.
Molecular Weight	Predicted: 56 kD; Observed: 54 kD
Form/Buffer	Liquid in PBS, pH 7.3, 50% glycerol, 0.05% BSA, and 0.05% Proclin300.
Alternative Names	PSS2; Phosphatidylserine synthase 2; PSS-2; PtdSer synthase 2; Serine-exchange enzyme II
Gene Symbol	PTDSS2
Entrez Gene	81490(Human)
SwissProt	Q9BVG9(Human)

*AREX continuously optimizes our products. Webpage content may not reflect the latest updates. For inquiries, please contact info@arexbio.com or your local distributor.

*Clone Number, Reactivity, Source/Host and Clonality can be found in the product name and Key Features section above.

DATASHEET**PTDSS2 Rabbit Monoclonal Antibody(C1980)**

CAT. NO. AMA01592

DATA

Western blot analysis of PTDSS2 expression in K562 (A) whole cell lysates. (Predicted band size: 56 kD; Observed band size: 54 kD)

STORAGE

Store at 4°C short term. For long term storage, store at -20°C, avoiding freeze/thaw cycles.

NOTE

For Research Use Only. Not for diagnostic, therapeutics, prophylactic or in vivo use.