

## DATASHEET

# TMEM248 Rabbit Monoclonal Antibody(C1983)

CAT. NO. AMA01595

### KEY FEATURES

Target	TMEM248	Source / Host	Rabbit
Reactivity	Human, Mouse, Rat	Clonality	Monoclonal
Applications	WB, FC	Conjugation	Unconjugated
Form / Buffer	Liquid in PBS, pH 7.3, 50% glycerol, 0.05% BSA, and 0.05% Proclin300.	Storage	at-20°C

### BACKGROUND

Transmembrane protein 248 (TMEM248). Belongs to the TMEM248 family Subcellular location: Membrane

### APPLICATION

To ensure optimal assay performance, AREX recommends conducting reagent titration tailored to each testing system for optimal detection results.

WB	1:500 - 1:1000
FC	1:50 - 1:100

\*Results are sample-specific. Please refer to your local assay conditions and test parameters for reference.

### PRODUCT OVERVIEW

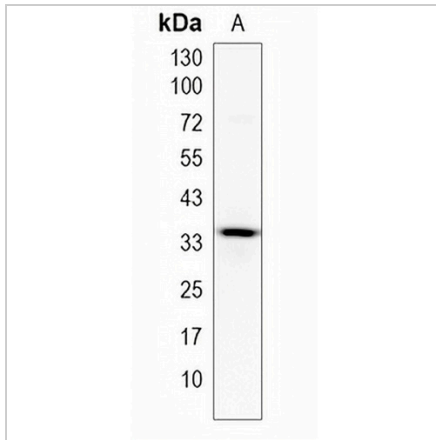
Description	Recombinant rabbit monoclonal antibody to TMEM248
Specificity	Recognizes endogenous levels of TMEM248 protein
Antibody Type	Primary antibody, Recombinant
Immunogen	Recombinant fusion protein of human TMEM248. The exact sequence is proprietary.
Purification	The antibody was purified by immunogen affinity chromatography.
Molecular Weight	Predicted: 35 kD; Observed: 35 kD
Form/Buffer	Liquid in PBS, pH 7.3, 50% glycerol, 0.05% BSA, and 0.05% Proclin300.
Alternative Names	C7orf42; Transmembrane protein 248
Gene Symbol	TMEM248
Entrez Gene	55069(Human); 71667(Mouse); 288616(Rat)
SwissProt	Q9NWD8(Human); Q3TBN1(Mouse); Q6AY76(Rat)

\*AREX continuously optimizes our products. Webpage content may not reflect the latest updates. For inquiries, please contact [info@arexbio.com](mailto:info@arexbio.com) or your local distributor.

\*Clone Number, Reactivity, Source/Host and Clonality can be found in the product name and Key Features section above.

**DATASHEET****TMEM248 Rabbit Monoclonal Antibody(C1983)**

CAT. NO. AMA01595

**DATA**

Western blot analysis of TMEM248 expression in HeLa (A) whole cell lysates. (Predicted band size: 35 kD; Observed band size: 35 kD)

**STORAGE**

Store at 4°C short term. For long term storage, store at -20°C, avoiding freeze/thaw cycles.

**NOTE**

For Research Use Only. Not for diagnostic, therapeutics, prophylactic or in vivo use.