

DATASHEET

SLC25A26 Rabbit Monoclonal Antibody(C1994)

CAT. NO. AMA01606

KEY FEATURES

Target	SLC25A26	Source / Host	Rabbit
Reactivity	Human, Mouse, Rat	Clonality	Monoclonal
Applications	WB	Conjugation	Unconjugated
Form / Buffer	Liquid in PBS, pH 7.3, 50% glycerol, 0.05% BSA, and 0.05% Proclin300.	Storage	at-20°C

BACKGROUND

Mitochondrial S-adenosyl-L-methionine/S-adenosyl-L-homocysteine antiporter. Mediates the exchange of cytosolic S-adenosyl-L-methionine, the predominant methyl-group donor for macromolecule methylation processes, for mitochondrial S-adenosylhomocysteine(SAH), a by-product of methylation reactions.

APPLICATION

To ensure optimal assay performance, AREX recommends conducting reagent titration tailored to each testing system for optimal detection results.

WB	1:500 - 1:1000
----	----------------

*Results are sample-specific. Please refer to your local assay conditions and test parameters for reference.

PRODUCT OVERVIEW

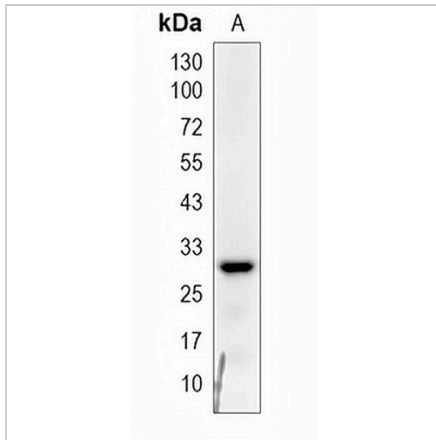
Description	Recombinant rabbit monoclonal antibody to SLC25A26
Specificity	Recognizes endogenous levels of SLC25A26 protein
Antibody Type	Primary antibody, Recombinant
Immunogen	Recombinant fusion protein of human SLC25A26. The exact sequence is proprietary.
Purification	The antibody was purified by immunogen affinity chromatography.
Molecular Weight	Predicted: 29 kD; Observed: 30 kD
Form/Buffer	Liquid in PBS, pH 7.3, 50% glycerol, 0.05% BSA, and 0.05% Proclin300.
Alternative Names	SAMC; S-adenosylmethionine mitochondrial carrier protein; Mitochondrial S-adenosylmethionine transporter; Solute carrier family 25 member 26
Gene Symbol	SLC25A26
Entrez Gene	115286(Human); 67582(Mouse)
SwissProt	Q70HW3(Human); Q5U680(Mouse)

*AREX continuously optimizes our products. Webpage content may not reflect the latest updates. For inquiries, please contact info@arexbio.com or your local distributor.

*Clone Number, Reactivity, Source/Host and Clonality can be found in the product name and Key Features section above.

DATASHEET**SLC25A26 Rabbit Monoclonal Antibody(C1994)**

CAT. NO. AMA01606

DATA

Western blot analysis of SLC25A26 expression in human skeletal muscle (A) whole cell lysates. (Predicted band size: 29 kD; Observed band size: 30 kD)

STORAGE

Store at 4°C short term. For long term storage, store at -20°C, avoiding freeze/thaw cycles.

NOTE

For Research Use Only. Not for diagnostic, therapeutics, prophylactic or in vivo use.