

DATASHEET

SYPL1 Rabbit Monoclonal Antibody(C1996)

CAT. NO. AMA01608

KEY FEATURES

Target	SYPL1	Source / Host	Rabbit
Reactivity	Human, Mouse, Rat	Clonality	Monoclonal
Applications	WB	Conjugation	Unconjugated
Form / Buffer	Liquid in PBS, pH 7.3, 50% glycerol, 0.05% BSA, and 0.05% Proclin300.	Storage	at-20°C

BACKGROUND

Synaptophysin-like protein 1 (SYPL1), also known as Pantophysin. Belongs to the synaptophysin/synaptobrevin family Subcellular location: Cytoplasmic vesicle membrane; Melanosome

APPLICATION

To ensure optimal assay performance, AREX recommends conducting reagent titration tailored to each testing system for optimal detection results.

WB	1:500 - 1:1000
----	----------------

*Results are sample-specific. Please refer to your local assay conditions and test parameters for reference.

PRODUCT OVERVIEW

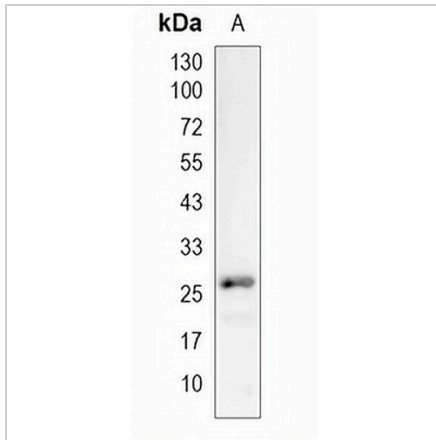
Description	Recombinant rabbit monoclonal antibody to SYPL1
Specificity	Recognizes endogenous levels of SYPL1 protein
Antibody Type	Primary antibody, Recombinant
Immunogen	Recombinant fusion protein of human SYPL1. The exact sequence is proprietary.
Purification	The antibody was purified by immunogen affinity chromatography.
Molecular Weight	Predicted: 28 kD; Observed: 28 kD
Form/Buffer	Liquid in PBS, pH 7.3, 50% glycerol, 0.05% BSA, and 0.05% Proclin300.
Alternative Names	SYPL; Synaptophysin-like protein 1; Pantophysin
Gene Symbol	SYPL1
Entrez Gene	6856(Human); 19027(Mouse)
SwissProt	Q16563(Human); O09117(Mouse)

*AREX continuously optimizes our products. Webpage content may not reflect the latest updates. For inquiries, please contact info@arexbio.com or your local distributor.

*Clone Number, Reactivity, Source/Host and Clonality can be found in the product name and Key Features section above.

DATASHEET**SYPL1 Rabbit Monoclonal Antibody(C1996)**

CAT. NO. AMA01608

DATA

Western blot analysis of SYPL1 expression in A549 (A) whole cell lysates. (Predicted band size: 28 kD; Observed band size: 28 kD)

STORAGE

Store at 4°C short term. For long term storage, store at -20°C, avoiding freeze/thaw cycles.

NOTE

For Research Use Only. Not for diagnostic, therapeutics, prophylactic or in vivo use.