

DATASHEET

GMEB1 Rabbit Monoclonal Antibody(C1998)

CAT. NO. AMA01610

KEY FEATURES

Target	GMEB1	Source / Host	Rabbit
Reactivity	Human, Mouse, Rat	Clonality	Monoclonal
Applications	WB, IP	Conjugation	Unconjugated
Form / Buffer	Liquid in PBS, pH 7.3, 50% glycerol, 0.05% BSA, and 0.05% Proclin300.	Storage	at-20°C

BACKGROUND

Acts as a DNA-binding transcriptional regulator involved in modulating the expression of genes responsive to glucocorticoid signaling . Specifically binds AT-rich DNA motifs known as glucocorticoid modulatory elements (GMEs), repressing or enhancing transcription depending on cellular context . Forms heterodimeric complexes with GMEB2, which enhances its DNA-binding specificity and transcriptional activity. This complex plays a critical role in the repression of glucocorticoid receptor (GR/NR3C1) transcriptional activity, acting as a negative modulator of glucocorticoid signaling . Regulates dopamine-enriched midbrain genes, including tyrosine hydroxylase/TH and the dopamine transporter SLC6A3, essential for dopamine signaling . Also binds the transferrin receptor promoter.

APPLICATION

To ensure optimal assay performance, AREX recommends conducting reagent titration tailored to each testing system for optimal detection results.

WB	1:500 - 1:1000
IP	1:10 - 1:50

*Results are sample-specific. Please refer to your local assay conditions and test parameters for reference.

PRODUCT OVERVIEW

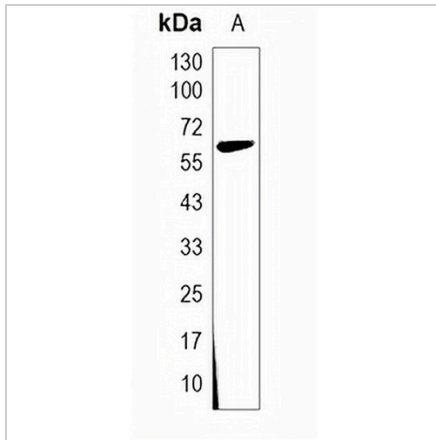
Description	Recombinant rabbit monoclonal antibody to GMEB1
Specificity	Recognizes endogenous levels of GMEB1 protein
Antibody Type	Primary antibody, Recombinant
Immunogen	Recombinant fusion protein of human GMEB1. The exact sequence is proprietary.
Purification	The antibody was purified by immunogen affinity chromatography.
Molecular Weight	Predicted: 62 kD; Observed: 63 kD
Form/Buffer	Liquid in PBS, pH 7.3, 50% glycerol, 0.05% BSA, and 0.05% Proclin300.
Alternative Names	Glucocorticoid modulatory element-binding protein 1; GMEB-1; DNA-binding protein p96PIF; Parvovirus initiation factor p96; PIF p96
Gene Symbol	GMEB1
Entrez Gene	10691(Human); 56809(Mouse); 500558(Rat)
SwissProt	Q9Y692(Human); Q9JL60(Mouse); Q9QUZ8(Rat)

*AREX continuously optimizes our products. Webpage content may not reflect the latest updates. For inquiries, please contact info@arexbio.com or your local distributor.

*Clone Number, Reactivity, Source/Host and Clonality can be found in the product name and Key Features section above.

DATASHEET**GMEB1 Rabbit Monoclonal Antibody(C1998)**

CAT. NO. AMA01610

DATA

Western blot analysis of GMEB1 expression in HeLa (A) whole cell lysates. (Predicted band size: 62 kD; Observed band size: 63 kD)

STORAGE

Store at 4°C short term. For long term storage, store at -20°C, avoiding freeze/thaw cycles.

NOTE

For Research Use Only. Not for diagnostic, therapeutics, prophylactic or in vivo use.