

DATASHEET

MTX3 Rabbit Monoclonal Antibody(C1999)

CAT. NO. AMA01611

KEY FEATURES

Target	MTX3	Source / Host	Rabbit
Reactivity	Human, Mouse, Rat	Clonality	Monoclonal
Applications	WB	Conjugation	Unconjugated
Form / Buffer	Liquid in PBS, pH 7.3, 50% glycerol, 0.05% BSA, and 0.05% Proclin300.	Storage	at-20°C

BACKGROUND

Could function in transport of proteins into the mitochondrion.

APPLICATION

To ensure optimal assay performance, AREX recommends conducting reagent titration tailored to each testing system for optimal detection results.

WB	1:500 - 1:1000
----	----------------

*Results are sample-specific. Please refer to your local assay conditions and test parameters for reference.

PRODUCT OVERVIEW

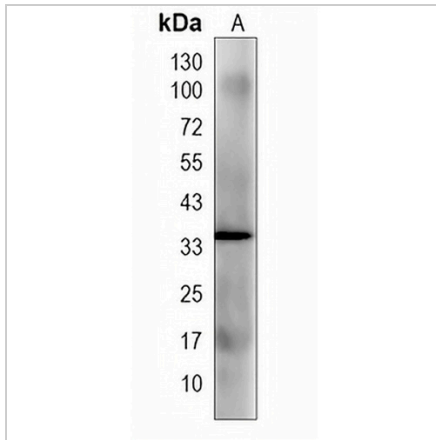
Description	Recombinant rabbit monoclonal antibody to MTX3
Specificity	Recognizes endogenous levels of MTX3 protein
Antibody Type	Primary antibody, Recombinant
Immunogen	Recombinant fusion protein of human MTX3. The exact sequence is proprietary.
Purification	The antibody was purified by immunogen affinity chromatography.
Molecular Weight	Predicted: 35 kD; Observed: 34 kD
Form/Buffer	Liquid in PBS, pH 7.3, 50% glycerol, 0.05% BSA, and 0.05% Proclin300.
Alternative Names	Metaxin-3
Gene Symbol	MTX3
Entrez Gene	345778(Human)
SwissProt	Q5HYI7(Human)

*AREX continuously optimizes our products. Webpage content may not reflect the latest updates. For inquiries, please contact info@arexbio.com or your local distributor.

*Clone Number, Reactivity, Source/Host and Clonality can be found in the product name and Key Features section above.

DATASHEET**MTX3 Rabbit Monoclonal Antibody(C1999)**

CAT. NO. AMA01611

DATA

Western blot analysis of MTX3 expression in HeLa (A) whole cell lysates. (Predicted band size: 35 kD; Observed band size: 34 kD)

STORAGE

Store at 4°C short term. For long term storage, store at -20°C, avoiding freeze/thaw cycles.

NOTE

For Research Use Only. Not for diagnostic, therapeutics, prophylactic or in vivo use.