

DATASHEET

TIAM2 Rabbit Monoclonal Antibody(C2005)

CAT. NO. AMA01617

KEY FEATURES

Target	TIAM2	Source / Host	Rabbit
Reactivity	Human, Mouse, Rat	Clonality	Monoclonal
Applications	WB	Conjugation	Unconjugated
Form / Buffer	Liquid in PBS, pH 7.3, 50% glycerol, 0.05% BSA, and 0.05% Proclin300.	Storage	at-20°C

BACKGROUND

Modulates the activity of RHO-like proteins and connects extracellular signals to cytoskeletal activities. Acts as a GDP-dissociation stimulator protein that stimulates the GDP-GTP exchange activity of RHO-like GTPases and activates them. Mediates extracellular laminin signals to activate Rac1, contributing to neurite growth. Involved in lamellipodial formation and advancement of the growth cone of embryonic hippocampal neurons. Promotes migration of neurons in the cerebral cortex. When overexpressed, induces membrane ruffling accompanied by the accumulation of actin filaments along the altered plasma membrane. Activates specifically RAC1, but not CDC42 and RHOA.

APPLICATION

To ensure optimal assay performance, AREX recommends conducting reagent titration tailored to each testing system for optimal detection results.

WB	1:500 - 1:1000
----	----------------

*Results are sample-specific. Please refer to your local assay conditions and test parameters for reference.

PRODUCT OVERVIEW

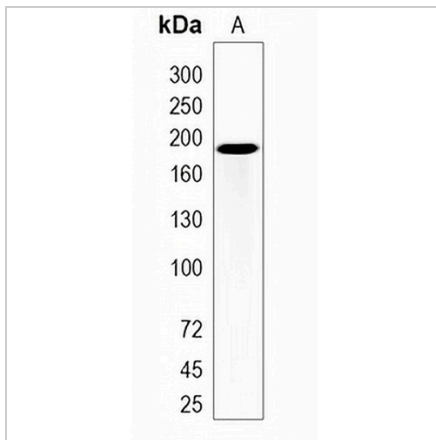
Description	Recombinant rabbit monoclonal antibody to TIAM2
Specificity	Recognizes endogenous levels of TIAM2 protein
Antibody Type	Primary antibody, Recombinant
Immunogen	Recombinant fusion protein of human TIAM2. The exact sequence is proprietary.
Purification	The antibody was purified by immunogen affinity chromatography.
Molecular Weight	Predicted: 190 kD; Observed: 187 kD
Form/Buffer	Liquid in PBS, pH 7.3, 50% glycerol, 0.05% BSA, and 0.05% Proclin300.
Alternative Names	KIAA2016; STEF; T-lymphoma invasion and metastasis-inducing protein 2; TIAM-2; SIF and TIAM1-like exchange factor
Gene Symbol	TIAM2
Entrez Gene	26230(Human); 24001(Mouse)
SwissProt	Q8IVF5(Human); Q6ZPF3(Mouse)

*AREX continuously optimizes our products. Webpage content may not reflect the latest updates. For inquiries, please contact info@arexbio.com or your local distributor.

*Clone Number, Reactivity, Source/Host and Clonality can be found in the product name and Key Features section above.

DATASHEET**TIAM2 Rabbit Monoclonal Antibody(C2005)**

CAT. NO. AMA01617

DATA

Western blot analysis of TIAM2 expression in K562 (A) whole cell lysates. (Predicted band size: 190 kD; Observed band size: 187 kD)

STORAGE

Store at 4°C short term. For long term storage, store at -20°C, avoiding freeze/thaw cycles.

NOTE

For Research Use Only. Not for diagnostic, therapeutics, prophylactic or in vivo use.