

DATASHEET

CLEC2B Rabbit Monoclonal Antibody(C2007)

CAT. NO. AMA01619

KEY FEATURES

Target	CLEC2B	Source / Host	Rabbit
Reactivity	Human	Clonality	Monoclonal
Applications	WB, IP	Conjugation	Unconjugated
Form / Buffer	Liquid in PBS, pH 7.3, 50% glycerol, 0.05% BSA, and 0.05% Proclin300.	Storage	at-20°C

BACKGROUND

Membrane-bound protein expressed on myeloid cells which acts as a ligand to stimulate the activating receptor NKp80/KLRF1, expressed on the surface of natural killer (NK) cells. In turn, stimulates NK-cell cytotoxicity and cytokine production leading to the cytotoxicity of malignant CLEC2B-expressing myeloid cells.

APPLICATION

To ensure optimal assay performance, AREX recommends conducting reagent titration tailored to each testing system for optimal detection results.

WB	1:500 - 1:1000
IP	1:10 - 1:50

*Results are sample-specific. Please refer to your local assay conditions and test parameters for reference.

PRODUCT OVERVIEW

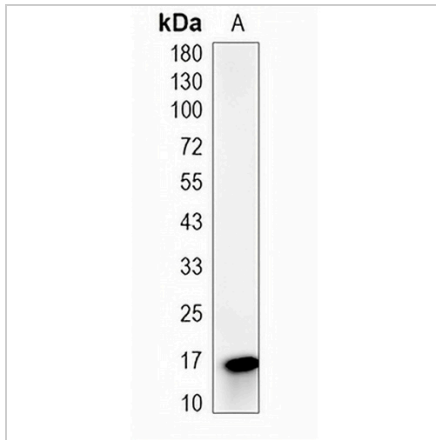
Description	Recombinant rabbit monoclonal antibody to CLEC2B
Specificity	Recognizes endogenous levels of CLEC2B protein
Antibody Type	Primary antibody, Recombinant
Immunogen	Recombinant fusion protein of human CLEC2B. The exact sequence is proprietary.
Purification	The antibody was purified by immunogen affinity chromatography.
Molecular Weight	Predicted: 17 kD; Observed: 16 kD
Form/Buffer	Liquid in PBS, pH 7.3, 50% glycerol, 0.05% BSA, and 0.05% Proclin300.
Alternative Names	AICL; CLECSF2; IFNRG1; C-type lectin domain family 2 member B; Activation-induced C-type lectin; C-type lectin superfamily member 2; IFN-alpha-2b-inducing-related protein 1
Gene Symbol	CLEC2B
Entrez Gene	9976(Human)
SwissProt	Q92478(Human)

*AREX continuously optimizes our products. Webpage content may not reflect the latest updates. For inquiries, please contact info@arexbio.com or your local distributor.

*Clone Number, Reactivity, Source/Host and Clonality can be found in the product name and Key Features section above.

DATASHEET**CLEC2B Rabbit Monoclonal Antibody(C2007)**

CAT. NO. AMA01619

DATA

Western blot analysis of CLEC2B expression in HeLa (A) whole cell lysates. (Predicted band size: 17 kD; Observed band size: 16 kD)

STORAGE

Store at 4°C short term. For long term storage, store at -20°C, avoiding freeze/thaw cycles.

NOTE

For Research Use Only. Not for diagnostic, therapeutics, prophylactic or in vivo use.