

DATASHEET

SLBP Rabbit Monoclonal Antibody(C2008)

CAT. NO. AMA01620

KEY FEATURES

Target	SLBP	Source / Host	Rabbit
Reactivity	Human	Clonality	Monoclonal
Applications	WB, IP	Conjugation	Unconjugated
Form / Buffer	Liquid in PBS, pH 7.3, 50% glycerol, 0.05% BSA, and 0.05% Proclin300.	Storage	at-20°C

BACKGROUND

RNA-binding protein involved in the histone pre-mRNA processing . Binds the stem-loop structure of replication-dependent histone pre-mRNAs and contributes to efficient 3'-end processing by stabilizing the complex between histone pre-mRNA and U7 small nuclear ribonucleoprotein (snRNP), via the histone downstream element (HDE) . Plays an important role in targeting mature histone mRNA from the nucleus to the cytoplasm and to the translation machinery . Stabilizes mature histone mRNA and could be involved in cell-cycle regulation of histone gene expression . Involved in the mechanism by which growing oocytes accumulate histone proteins that support early embryogenesis . Binds to the 5' side of the stem-loop structure of histone pre-mRNAs .

APPLICATION

To ensure optimal assay performance, AREX recommends conducting reagent titration tailored to each testing system for optimal detection results.

WB	1:500 - 1:1000
IP	1:10 - 1:50

*Results are sample-specific. Please refer to your local assay conditions and test parameters for reference.

PRODUCT OVERVIEW

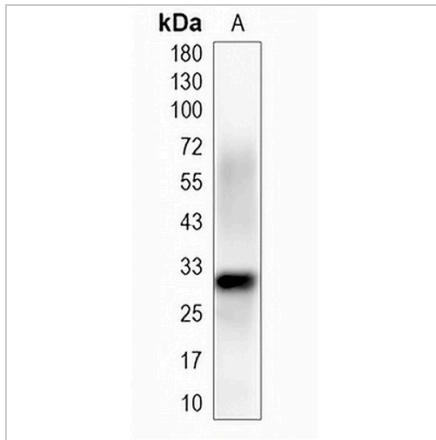
Description	Recombinant rabbit monoclonal antibody to SLBP
Specificity	Recognizes endogenous levels of SLBP protein
Antibody Type	Primary antibody, Recombinant
Immunogen	Recombinant fusion protein of human SLBP. The exact sequence is proprietary.
Purification	The antibody was purified by immunogen affinity chromatography.
Molecular Weight	Predicted: 31 kD; Observed: 30 kD
Form/Buffer	Liquid in PBS, pH 7.3, 50% glycerol, 0.05% BSA, and 0.05% Proclin300.
Alternative Names	HBP; Histone RNA hairpin-binding protein; Histone stem-loop-binding protein
Gene Symbol	SLBP
Entrez Gene	7884(Human)
SwissProt	Q14493(Human)

*AREX continuously optimizes our products. Webpage content may not reflect the latest updates. For inquiries, please contact info@arexbio.com or your local distributor.

*Clone Number, Reactivity, Source/Host and Clonality can be found in the product name and Key Features section above.

DATASHEET**SLBP Rabbit Monoclonal Antibody(C2008)**

CAT. NO. AMA01620

DATA

Western blot analysis of SLBP expression in HEK293T (A) whole cell lysates. (Predicted band size: 31 kD; Observed band size: 30 kD)

STORAGE

Store at 4°C short term. For long term storage, store at -20°C, avoiding freeze/thaw cycles.

NOTE

For Research Use Only. Not for diagnostic, therapeutics, prophylactic or in vivo use.