

DATASHEET

Fibronectin Rabbit Monoclonal Antibody(C2014)

CAT. NO. AMA01626

KEY FEATURES

Target	Fibronectin	Source / Host	Rabbit
Reactivity	Human, Mouse, Rat	Clonality	Monoclonal
Applications	WB, IHC, IF/ICC, IP	Conjugation	Unconjugated
Form / Buffer	Liquid in PBS, pH 7.3, 50% glycerol, 0.05% BSA, and 0.05% Proclin300.	Storage	at-20°C

BACKGROUND

Fibronectins bind cell surfaces and various compounds including collagen, fibrin, heparin, DNA, and actin . Fibronectins are involved in cell adhesion, cell motility, opsonization, wound healing, and maintenance of cell shape . Involved in osteoblast compaction through the fibronectin fibrillogenesis cell-mediated matrix assembly process, essential for osteoblast mineralization . Participates in the regulation of type I collagen deposition by osteoblasts . Acts as a ligand for the LILRB4 receptor; inhibiting FCGR1A/CD64-mediated monocyte activation .

APPLICATION

To ensure optimal assay performance, AREX recommends conducting reagent titration tailored to each testing system for optimal detection results.

WB	1:500 - 1:2000
IHC	1:100 - 1:300
IF/ICC	1:100 - 1:300
IP	1:50 - 1:100

*Results are sample-specific. Please refer to your local assay conditions and test parameters for reference.

PRODUCT OVERVIEW

Description	Recombinant rabbit monoclonal antibody to Fibronectin
Specificity	Recognizes endogenous levels of Fibronectin protein.
Antibody Type	Primary antibody, Recombinant
Immunogen	Recombinant fusion protein of human Fibronectin. The exact sequence is proprietary.
Purification	The antibody was purified by immunogen affinity chromatography.
Molecular Weight	Predicted: 272 kD; Observed: 280 kD
Form/Buffer	Liquid in PBS, pH 7.3, 50% glycerol, 0.05% BSA, and 0.05% Proclin300.
Alternative Names	FN; Fibronectin; FN; Cold-insoluble globulin; CIG
Gene Symbol	FN1
Entrez Gene	2335(Human); 14268(Mouse); 14268(Rat)
SwissProt	P02751(Human); P11276(Mouse); P04937(Rat)

*AREX continuously optimizes our products. Webpage content may not reflect the latest updates. For inquiries, please contact info@arexbio.com or your local distributor.

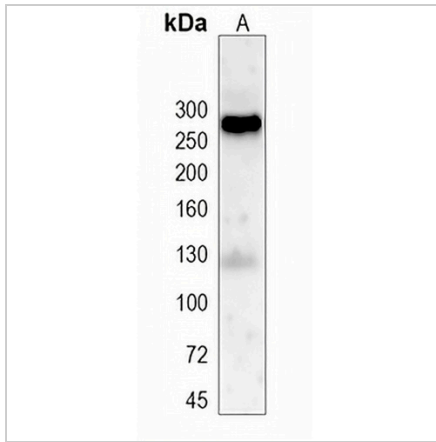
*Clone Number, Reactivity, Source/Host and Clonality can be found in the product name and Key Features section above.

DATASHEET

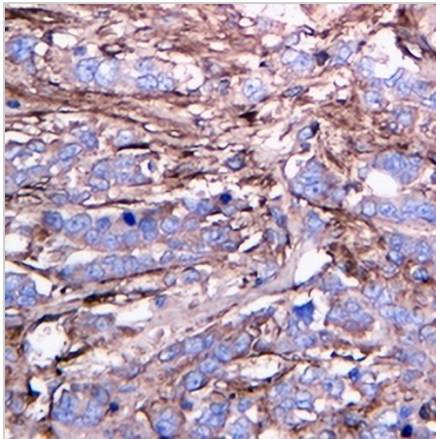
Fibronectin Rabbit Monoclonal Antibody(C2014)

CAT. NO. AMA01626

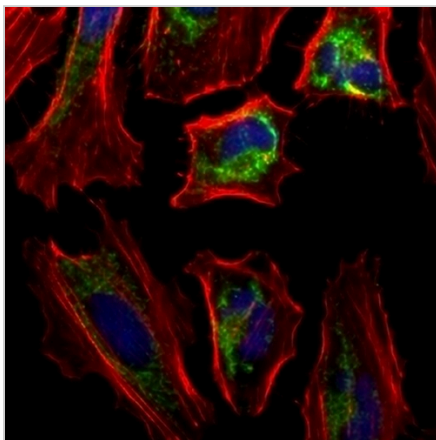
DATA



Western blot analysis of Fibronectin expression in HepG2 (A) whole cell lysates. (Predicted band size: 272 kD; Observed band size: 280 kD)



Immunohistochemical analysis of Fibronectin staining in human breast cancer formalin fixed paraffin embedded tissue section. The section was pre-treated using heat mediated antigen retrieval with sodium citrate buffer (pH 6.0). The section was then incubated with the antibody at room temperature and detected using an HRP conjugated compact polymer system. DAB was used as the chromogen. The section was then counterstained with haematoxylin and mounted with DPX.



Immunofluorescent analysis of Fibronectin staining in A549 cells. Formalin-fixed cells were permeabilized with 0.1% Triton X-100 in TBS for 5-10 minutes and blocked with 3% BSA-PBS for 30 minutes at room temperature. Cells were probed with the primary antibody in 3% BSA-PBS and incubated overnight at 4 °C in a humidified chamber. Cells were washed with PBST and incubated with an AREX® Fluor 488 -conjugated secondary antibody (green) in PBS at room temperature in the dark. Phalloidin - AREX® Fluor 594 was used to stain Actin filaments (red). DAPI was used to stain the cell nuclei (blue).

STORAGE

Store at 4°C short term. For long term storage, store at -20°C, avoiding freeze/thaw cycles.

NOTE

For Research Use Only. Not for diagnostic, therapeutics, prophylactic or in vivo use.