

## DATASHEET

# YTHDF1 Rabbit Monoclonal Antibody(C2017)

CAT. NO. AMA01629

### KEY FEATURES

Target	YTHDF1	Source / Host	Rabbit
Reactivity	Human, Mouse, Rat	Clonality	Monoclonal
Applications	WB, IHC, IF/ICC, IP	Conjugation	Unconjugated
Form / Buffer	Liquid in PBS, pH 7.3, 50% glycerol, 0.05% BSA, and 0.05% Proclin300.	Storage	at-20°C

### BACKGROUND

Specifically recognizes and binds N6-methyladenosine (m6A)-containing mRNAs, and regulates their stability -containing mRNAs, and regulates their stability . M6A is a modification present at internal sites of mRNAs and some non-coding RNAs and plays a role in mRNA stability and processing . Acts as a regulator of mRNA stability by promoting degradation of m6A-containing mRNAs via interaction with the CCR4-NOT complex . The YTHDF paralogs (YTHDF1, YTHDF2 and YTHDF3) shares m6A-containing mRNAs targets and act redundantly to mediate mRNA degradation and cellular differentiation . Required to facilitate learning and memory formation in the hippocampus by binding to m6A-containing neuronal mRNAs . Acts as a regulator of axon guidance by binding to m6A-containing ROBO3 transcripts .

### APPLICATION

To ensure optimal assay performance, AREX recommends conducting reagent titration tailored to each testing system for optimal detection results.

WB	1:500 - 1:2000
IHC	1:100 - 1:300
IF/ICC	1:100 - 1:300
IP	1:50 - 1:100

\*Results are sample-specific. Please refer to your local assay conditions and test parameters for reference.

### PRODUCT OVERVIEW

Description	Recombinant rabbit monoclonal antibody to YTHDF1
Specificity	Recognizes endogenous levels of YTHDF1 protein
Antibody Type	Primary antibody, Recombinant
Immunogen	Recombinant fusion protein of human YTHDF1. The exact sequence is proprietary.
Purification	The antibody was purified by immunogen affinity chromatography.
Molecular Weight	Predicted: 60 kD; Observed: 70 kD
Form/Buffer	Liquid in PBS, pH 7.3, 50% glycerol, 0.05% BSA, and 0.05% Proclin300.
Alternative Names	C20orf21; YTH domain-containing family protein 1; Dermatomyositis associated with cancer putative autoantigen 1; DACA-1
Gene Symbol	YTHDF1
Entrez Gene	54915(Human)
SwissProt	Q9BYJ9(Human)

\*AREX continuously optimizes our products. Webpage content may not reflect the latest updates. For inquiries, please contact [info@arexbio.com](mailto:info@arexbio.com) or your local distributor.

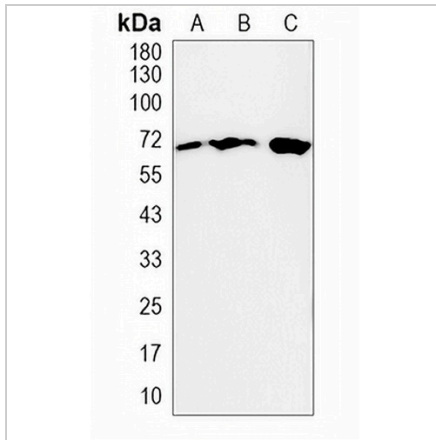
\*Clone Number, Reactivity, Source/Host and Clonality can be found in the product name and Key Features section above.

**DATASHEET**

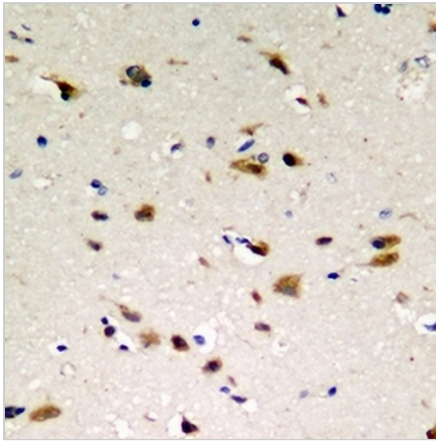
**YTHDF1 Rabbit Monoclonal Antibody(C2017)**

CAT. NO. AMA01629

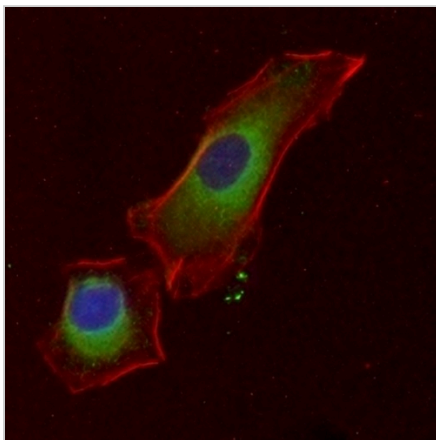
**DATA**



Western blot analysis of YTHDF1 expression in HL60 (A), 3T3L1 (B), PC12 (C) whole cell lysates. (Predicted band size: 60 kD; Observed band size: 70 kD)



Immunohistochemical analysis of YTHDF1 staining in human brain formalin fixed paraffin embedded tissue section. The section was pre-treated using heat mediated antigen retrieval with sodium citrate buffer (pH 6.0). The section was then incubated with the antibody at room temperature and detected using an HRP conjugated compact polymer system. DAB was used as the chromogen. The section was then counterstained with haematoxylin and mounted with DPX.



Immunofluorescent analysis of YTHDF1 staining in Hela cells. Formalin-fixed cells were permeabilized with 0.1% Triton X-100 in TBS for 5-10 minutes and blocked with 3% BSA-PBS for 30 minutes at room temperature. Cells were probed with the primary antibody in 3% BSA-PBS and incubated overnight at 4 °C in a humidified chamber. Cells were washed with PBST and incubated with an AREX® Fluor 488 -conjugated secondary antibody (green) in PBS at room temperature in the dark. Phalloidin - AREX® Fluor 594 was used to stain Actin filaments (red). DAPI was used to stain the cell nuclei (blue).

**STORAGE**

Store at 4°C short term. For long term storage, store at -20°C, avoiding freeze/thaw cycles.

**NOTE**

For Research Use Only. Not for diagnostic, therapeutics, prophylactic or in vivo use.