

## DATASHEET

# Phospho-Serine/Threonine Rabbit Monoclonal Antibody(C2018)

CAT. NO. AMA01630

### KEY FEATURES

Target	Phospho-Serine/Threonine	Source / Host	Rabbit
Reactivity	Human, Mouse, Rat	Clonality	Monoclonal
Applications	WB	Conjugation	Unconjugated
Form / Buffer	Liquid in PBS, pH 7.3, 50% glycerol, 0.05% BSA, and 0.05% Proclin300.	Storage	at-20°C

### BACKGROUND

Phosphorylation of serine and threonine residues is one of the most common reversible post-translational modifications, regulated by protein kinases and phosphatases. It plays a central role in signal transduction, cell cycle regulation, transcription, and metabolism. Pan anti-phospho-Ser/Thr antibodies recognize the phosphorylated motif regardless of surrounding sequence and are used to study global phosphorylation events in WB, IF, and IP.

### APPLICATION

To ensure optimal assay performance, AREX recommends conducting reagent titration tailored to each testing system for optimal detection results.

WB	1:1000 - 1:3000
----	-----------------

\*Results are sample-specific. Please refer to your local assay conditions and test parameters for reference.

### PRODUCT OVERVIEW

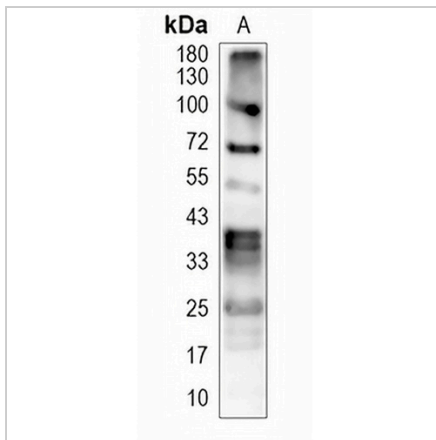
Description	Recombinant rabbit monoclonal antibody to Phospho-Serine/Threonine
Specificity	Recognizes endogenous levels of Phospho-Serine/Threonine protein
Antibody Type	Primary antibody, Recombinant
Immunogen	KLH-conjugated synthetic peptide of Phospho-Serine/Threonine. The exact sequence is proprietary.
Purification	The antibody was purified by immunogen affinity chromatography.
Form/Buffer	Liquid in PBS, pH 7.3, 50% glycerol, 0.05% BSA, and 0.05% Proclin300.

\*AREX continuously optimizes our products. Webpage content may not reflect the latest updates. For inquiries, please contact [info@arexbio.com](mailto:info@arexbio.com) or your local distributor.

\*Clone Number, Reactivity, Source/Host and Clonality can be found in the product name and Key Features section above.

**DATASHEET****Phospho-Serine/Threonine Rabbit Monoclonal Antibody(C2018)**

CAT. NO. AMA01630

**DATA**

Western blot analysis of Phospho-Serine/Threonine expression in Jurkat (A) whole cell lysates. (Observed band size: Multiple bands)

**STORAGE**

Store at 4°C short term. For long term storage, store at -20°C, avoiding freeze/thaw cycles.

**NOTE**

For Research Use Only. Not for diagnostic, therapeutics, prophylactic or in vivo use.