

**DATASHEET**

**XBP1 Rabbit Monoclonal Antibody(C2021)**

CAT. NO. AMA01633

**KEY FEATURES**

Target	XBP1	Source / Host	Rabbit
Reactivity	Human, Mouse, Rat	Clonality	Monoclonal
Applications	WB, IHC, IF/ICC, IP	Conjugation	Unconjugated
Form / Buffer	Liquid in PBS, pH 7.3, 50% glycerol, 0.05% BSA, and 0.05% Proclin300.	Storage	at-20°C

**BACKGROUND**

Functions as a transcription factor during endoplasmic reticulum (ER) stress by regulating the unfolded protein response (UPR). Required for cardiac myogenesis and hepatogenesis during embryonic development, and the development of secretory tissues such as exocrine pancreas and salivary gland . Involved in terminal differentiation of B lymphocytes to plasma cells and production of immunoglobulins stress by regulating the unfolded protein response (UPR). Required for cardiac myogenesis and hepatogenesis during embryonic development, and the development of secretory tissues such as exocrine pancreas and salivary gland . Involved in terminal differentiation of B lymphocytes to plasma cells and production of immunoglobulins .

**APPLICATION**

To ensure optimal assay performance, AREX recommends conducting reagent titration tailored to each testing system for optimal detection results.

WB	1:500 - 1:2000
IHC	1:100 - 1:300
IF/ICC	1:100 - 1:300
IP	1:50 - 1:100

\*Results are sample-specific. Please refer to your local assay conditions and test parameters for reference.

**PRODUCT OVERVIEW**

Description	Recombinant rabbit monoclonal antibody to XBP1
Specificity	Recognizes endogenous levels of XBP1 protein.
Antibody Type	Primary antibody, Recombinant
Immunogen	Recombinant protein of human XBP1. The exact sequence is proprietary.
Purification	The antibody was purified by immunogen affinity chromatography.
Molecular Weight	Predicted: 29 kD; Observed: 35, 54 kD
Form/Buffer	Liquid in PBS, pH 7.3, 50% glycerol, 0.05% BSA, and 0.05% Proclin300.
Alternative Names	TREB5; XBP2; X-box-binding protein 1; XBP-1; Tax-responsive element-binding protein 5
Gene Symbol	XBP1
Entrez Gene	7494(Human); 22433(Mouse)
SwissProt	P17861(Human); O35426(Mouse)

\*AREX continuously optimizes our products. Webpage content may not reflect the latest updates. For inquiries, please contact [info@arexbio.com](mailto:info@arexbio.com) or your local distributor.

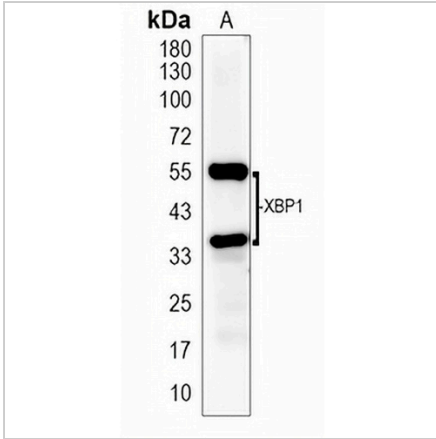
\*Clone Number, Reactivity, Source/Host and Clonality can be found in the product name and Key Features section above.

**DATASHEET**

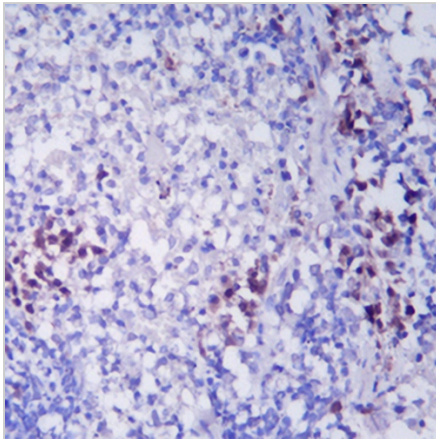
**XBP1 Rabbit Monoclonal Antibody(C2021)**

CAT. NO. AMA01633

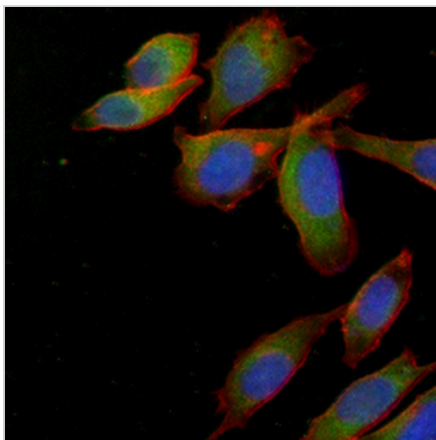
**DATA**



Western blot analysis of XBP1 expression in MCF7 (A) whole cell lysates. (Predicted band size: 29 kD; Observed band size: 35, 54 kD)



Immunohistochemical analysis of XBP1 staining in mouse spleen formalin fixed paraffin embedded tissue section. The section was pre-treated using heat mediated antigen retrieval with sodium citrate buffer (pH 6.0). The section was then incubated with the antibody at room temperature and detected using an HRP conjugated compact polymer system. DAB was used as the chromogen. The section was then counterstained with haematoxylin and mounted with DPX.



Immunofluorescent analysis of XBP1 staining in Hela cells. Formalin-fixed cells were permeabilized with 0.1% Triton X-100 in TBS for 5-10 minutes and blocked with 3% BSA-PBS for 30 minutes at room temperature. Cells were probed with the primary antibody in 3% BSA-PBS and incubated overnight at 4 °C in a humidified chamber. Cells were washed with PBST and incubated with an AREX® Fluor 488 -conjugated secondary antibody (green) in PBS at room temperature in the dark. Phalloidin - AREX® Fluor 594 was used to stain Actin filaments (red). DAPI was used to stain the cell nuclei (blue).

**STORAGE**

Store at 4°C short term. For long term storage, store at -20°C, avoiding freeze/thaw cycles.

**NOTE**

For Research Use Only. Not for diagnostic, therapeutics, prophylactic or in vivo use.