

DATASHEET

AmCyan-tag Mouse Monoclonal Antibody(C2031)

CAT. NO. AMA01643

KEY FEATURES

Target	AmCyan-tag	Source / Host	Mouse
Reactivity		Clonality	Monoclonal
Applications	WB, IP	Conjugation	Unconjugated
Form / Buffer	Liquid in 0.42% Potassium phosphate, 0.87% Sodium chloride, pH 7.3, 30% glycerol, and 0.01% sodium azide.		Storage at-20°C

BACKGROUND

AmCyan is a cyan fluorescent protein derived from the reef coral *Anemonia majano*, with excitation/emission maxima around 458/489 nm. It is widely used as a reporter for gene expression, protein localization, and live-cell imaging. Anti-AmCyan antibodies enable detection in WB, IP, IF, and IHC.

APPLICATION

To ensure optimal assay performance, AREX recommends conducting reagent titration tailored to each testing system for optimal detection results.

WB	1:2000 - 1:5000
IP	1:100 - 1:200

*Results are sample-specific. Please refer to your local assay conditions and test parameters for reference.

PRODUCT OVERVIEW

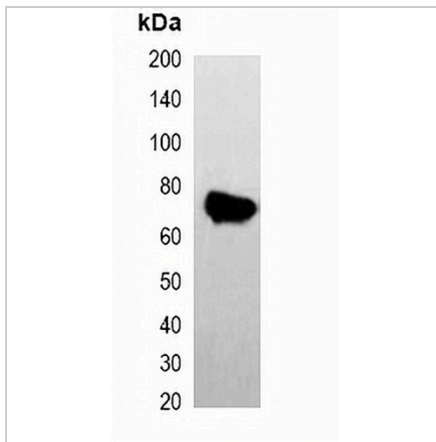
Description	Mouse monoclonal antibody to AmCyan-tag
Specificity	Recognizes AmCyan and AmCyan Tag protein.
Antibody Type	Primary antibody,Tag
Immunogen	Recombinant protein corresponding to AmCyan-tag.
Purification	Affinity chromatography
Form/Buffer	Liquid in 0.42% Potassium phosphate, 0.87% Sodium chloride, pH 7.3, 30% glycerol, and 0.01% sodium azide.

*AREX continuously optimizes our products. Webpage content may not reflect the latest updates. For inquiries, please contact info@arexbio.com or your local distributor.

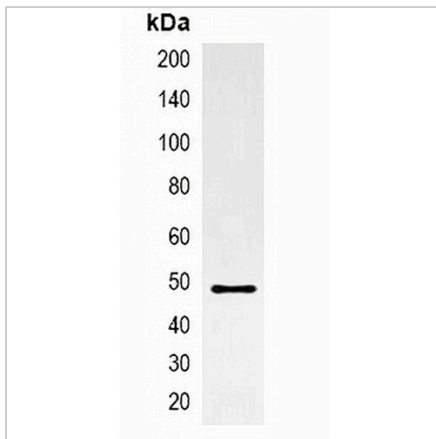
*Clone Number, Reactivity, Source/Host and Clonality can be found in the product name and Key Features section above.

DATASHEET**AmCyan-tag Mouse Monoclonal Antibody(C2031)**

CAT. NO. AMA01643

DATA

Western blot analysis of over-expressed AmCyan-tagged protein in 293T cell lysate.



Immunoprecipitation of AmCyan-tagged protein from HEK293T cells transfected with vector overexpressing AmCyan tag, using Anti-AmCyan-tag Antibody.

STORAGE

Store at 4°C short term. For long term storage, store at -20°C, avoiding freeze/thaw cycles.

NOTE

For Research Use Only. Not for diagnostic, therapeutics, prophylactic or in vivo use.