

## DATASHEET

# CBP-tag Mouse Monoclonal Antibody(C2033)

CAT. NO. AMA01645

### KEY FEATURES

Target	CBP-tag	Source / Host	Mouse
Reactivity		Clonality	Monoclonal
Applications	WB, IP	Conjugation	Unconjugated
Form / Buffer	Liquid in 0.42% Potassium phosphate, 0.87% Sodium chloride, pH 7.3, 30% glycerol, and 0.01% sodium azide.		Storage at-20°C

### BACKGROUND

The CBP-tag (calmodulin-binding peptide) is a 26-amino-acid sequence from skeletal muscle myosin light-chain kinase. It binds calmodulin with high affinity in the presence of calcium and elutes under mild conditions with EGTA, making it ideal for tandem affinity purification (TAP). Anti-CBP antibodies enable detection in WB and IP.

### APPLICATION

To ensure optimal assay performance, AREX recommends conducting reagent titration tailored to each testing system for optimal detection results.

WB	1:2000 - 1:5000
IP	1:100 - 1:200

\*Results are sample-specific. Please refer to your local assay conditions and test parameters for reference.

### PRODUCT OVERVIEW

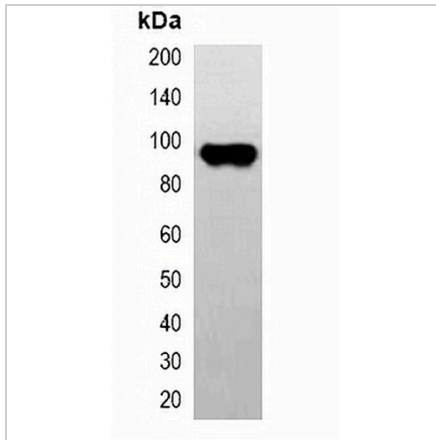
Description	Mouse monoclonal antibody to CBP-tag
Specificity	Recognizes CBP-tag protein.
Antibody Type	Primary antibody,Tag
Immunogen	Recombinant protein corresponding to CBP-tag.
Purification	Affinity chromatography
Form/Buffer	Liquid in 0.42% Potassium phosphate, 0.87% Sodium chloride, pH 7.3, 30% glycerol, and 0.01% sodium azide.

\*AREX continuously optimizes our products. Webpage content may not reflect the latest updates. For inquiries, please contact [info@arexbio.com](mailto:info@arexbio.com) or your local distributor.

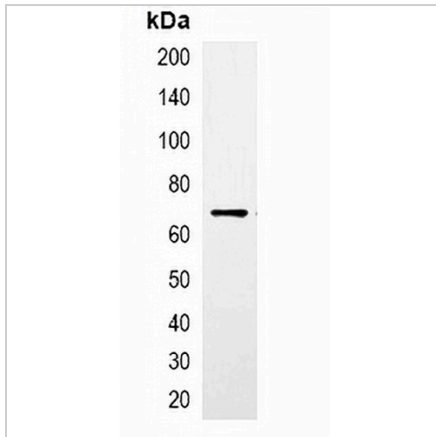
\*Clone Number, Reactivity, Source/Host and Clonality can be found in the product name and Key Features section above.

**DATASHEET****CBP-tag Mouse Monoclonal Antibody(C2033)**

CAT. NO. AMA01645

**DATA**

Western blot analysis of over-expressed CBP-tagged protein in 293T cell lysate.



Immunoprecipitation of CBP-tagged protein from HEK293T cells transfected with vector overexpressing CBP tag, using Anti-CBP-tag Antibody.

**STORAGE**

Store at 4°C short term. For long term storage, store at -20°C, avoiding freeze/thaw cycles.

**NOTE**

For Research Use Only. Not for diagnostic, therapeutics, prophylactic or in vivo use.