

DATASHEET

E2-tag Mouse Monoclonal Antibody(C2034)

CAT. NO. AMA01646

KEY FEATURES

Target	E2-tag	Source / Host	Mouse
Reactivity		Clonality	Monoclonal
Applications	WB	Conjugation	Unconjugated
Form / Buffer	Liquid in 0.42% Potassium phosphate, 0.87% Sodium chloride, pH 7.3, 30% glycerol, and 0.01% sodium azide.		Storage at-20°C

BACKGROUND

The E2-tag is a small epitope tag derived from the E2 protein of bovine papillomavirus, used for affinity purification and immunodetection of fusion proteins. Anti-E2 antibodies provide highly specific detection in Western blot and immunoprecipitation.

APPLICATION

To ensure optimal assay performance, AREX recommends conducting reagent titration tailored to each testing system for optimal detection results.

WB	1:2000 - 1:5000
----	-----------------

*Results are sample-specific. Please refer to your local assay conditions and test parameters for reference.

PRODUCT OVERVIEW

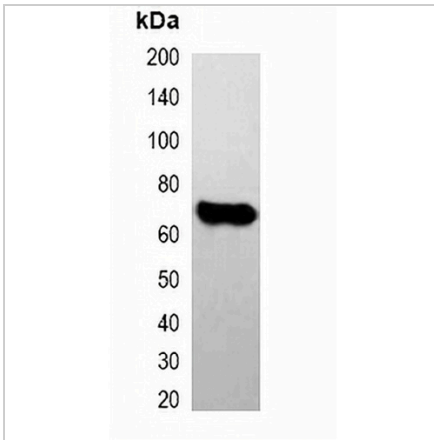
Description	Mouse monoclonal antibody to E2-tag
Specificity	Recognizes E2 tag fusion proteins.
Antibody Type	Primary antibody,Tag
Immunogen	KLH-conjugated synthetic peptide encompassing a sequence of E2-tag. The exact sequence is proprietary.
Purification	Affinity chromatography
Form/Buffer	Liquid in 0.42% Potassium phosphate, 0.87% Sodium chloride, pH 7.3, 30% glycerol, and 0.01% sodium azide.

*AREX continuously optimizes our products. Webpage content may not reflect the latest updates. For inquiries, please contact info@arexbio.com or your local distributor.

*Clone Number, Reactivity, Source/Host and Clonality can be found in the product name and Key Features section above.

DATASHEET**E2-tag Mouse Monoclonal Antibody(C2034)**

CAT. NO. AMA01646

DATA

Western blot analysis of over-expressed E2-tagged protein in 293T cell lysate.

STORAGE

Store at 4°C short term. For long term storage, store at -20°C, avoiding freeze/thaw cycles.

NOTE

For Research Use Only. Not for diagnostic, therapeutics, prophylactic or in vivo use.