

DATASHEET

EBFP-tag Mouse Monoclonal Antibody(C2035)

CAT. NO. AMA01647

KEY FEATURES

Target	EBFP-tag	Source / Host	Mouse
Reactivity		Clonality	Monoclonal
Applications	WB, IP	Conjugation	Unconjugated
Form / Buffer	Liquid in 0.42% Potassium phosphate, 0.87% Sodium chloride, pH 7.3, 30% glycerol, and 0.01% sodium azide.		Storage at-20°C

BACKGROUND

EBFP (Enhanced Blue Fluorescent Protein) is a blue-emitting variant of GFP from *Aequorea victoria* with excitation/emission maxima around 380/440 nm. It is used as a reporter for gene expression and protein localization in live cells. Anti-EBFP antibodies enable detection by WB, IP, and IF.

APPLICATION

To ensure optimal assay performance, AREX recommends conducting reagent titration tailored to each testing system for optimal detection results.

WB	1:2000 - 1:5000
IP	1:100 - 1:200

*Results are sample-specific. Please refer to your local assay conditions and test parameters for reference.

PRODUCT OVERVIEW

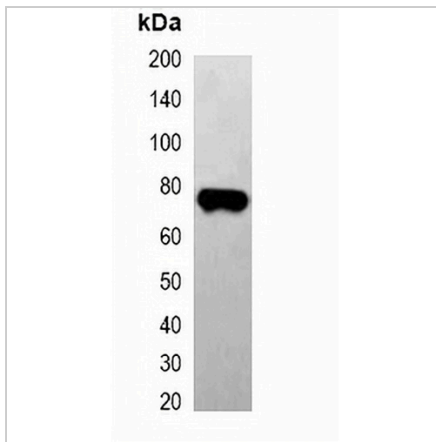
Description	Mouse monoclonal antibody to EBFP-tag
Specificity	Recognizes EBFP and EBFP tag fusion proteins.
Antibody Type	Primary antibody, Tag
Immunogen	Recombinant protein corresponding to EBFP-tag.
Purification	Affinity chromatography
Form/Buffer	Liquid in 0.42% Potassium phosphate, 0.87% Sodium chloride, pH 7.3, 30% glycerol, and 0.01% sodium azide.

*AREX continuously optimizes our products. Webpage content may not reflect the latest updates. For inquiries, please contact info@arexbio.com or your local distributor.

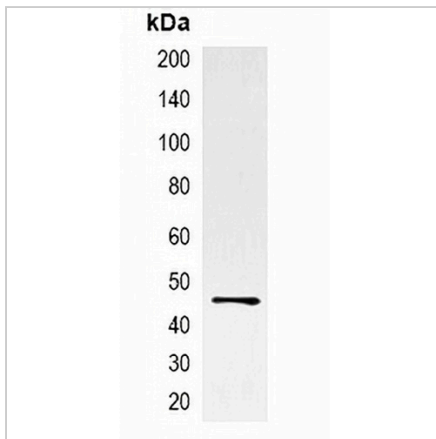
*Clone Number, Reactivity, Source/Host and Clonality can be found in the product name and Key Features section above.

DATASHEET**EBFP-tag Mouse Monoclonal Antibody(C2035)**

CAT. NO. AMA01647

DATA

Western blot analysis of over-expressed EBFP-tagged protein in 293T cell lysate.



Immunoprecipitation of EBFP-tagged protein from HEK293T cells transfected with vector overexpressing EBFP tag, using Anti-EBFP-tag Antibody.

STORAGE

Store at 4°C short term. For long term storage, store at -20°C, avoiding freeze/thaw cycles.

NOTE

For Research Use Only. Not for diagnostic, therapeutics, prophylactic or in vivo use.