

DATASHEET

HRP-conjugated FLAG-tag Mouse Monoclonal Antibody(C2038)

CAT. NO. AMA01650

KEY FEATURES

Target	FLAG-tag	Source / Host	Mouse
Reactivity		Clonality	Monoclonal
Applications	WB	Conjugation	HRP
Form / Buffer	Liquid in 0.42% Potassium phosphate, 0.87% Sodium chloride, pH 7.3, 30% glycerol, and 0.01% sodium azide.		Storage at-20°C

BACKGROUND

The FLAG-tag is a short, hydrophilic 8-amino-acid peptide (DYKDDDDK) developed by Sigma-Aldrich for affinity purification and detection of recombinant fusion proteins. FLAG is one of the most popular tags due to its small size, high specificity of available antibodies, and gentle elution conditions for purified proteins. Anti-FLAG antibodies are widely used in WB, IP, IF, IHC, and FACS.

APPLICATION

To ensure optimal assay performance, AREX recommends conducting reagent titration tailored to each testing system for optimal detection results.

WB	1:5000 - 1:20000
----	------------------

*Results are sample-specific. Please refer to your local assay conditions and test parameters for reference.

PRODUCT OVERVIEW

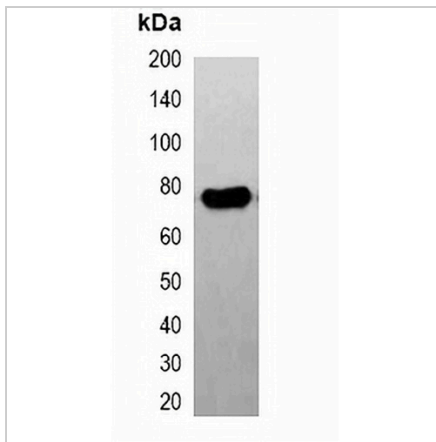
Description	Mouse monoclonal antibody to FLAG-tag-HRP labeled
Specificity	Recognizes C-terminal, internal, and N-terminal FLAG-tag fusion proteins
Antibody Type	Primary antibody,Tag
Immunogen	KLH-conjugated synthetic peptide encompassing a sequence of FLAG-tag. The exact sequence is proprietary.
Purification	Affinity chromatography
Form/Buffer	Liquid in 0.42% Potassium phosphate, 0.87% Sodium chloride, pH 7.3, 30% glycerol, and 0.01% sodium azide.

*AREX continuously optimizes our products. Webpage content may not reflect the latest updates. For inquiries, please contact info@arexbio.com or your local distributor.

*Clone Number, Reactivity, Source/Host and Clonality can be found in the product name and Key Features section above.

DATASHEET**HRP-conjugated FLAG-tag Mouse Monoclonal Antibody(C2038)**

CAT. NO. AMA01650

DATA

Western blot analysis of over-expressed FLAG-tagged protein in 293T cell lysate.

STORAGE

Store at 4°C short term. For long term storage, store at -20°C, avoiding freeze/thaw cycles.

NOTE

For Research Use Only. Not for diagnostic, therapeutics, prophylactic or in vivo use.