

DATASHEET

GST-tag Mouse Monoclonal Antibody(C2043)

CAT. NO. AMA01655

KEY FEATURES

Target	GST-tag	Source / Host	Mouse
Reactivity		Clonality	Monoclonal
Applications	WB, IP	Conjugation	Unconjugated
Form / Buffer	Liquid in 0.42% Potassium phosphate, 0.87% Sodium chloride, pH 7.3, 30% glycerol, and 0.01% sodium azide.		Storage at-20°C

BACKGROUND

Glutathione S-transferase (GST) is a 26 kDa protein from *Schistosoma japonicum* used as a fusion tag for the expression and purification of recombinant proteins. GST-tagged proteins are purified by affinity chromatography using glutathione-conjugated resins. Anti-GST antibodies are used to detect GST fusion proteins in WB, ELISA, and pull-down assays.

APPLICATION

To ensure optimal assay performance, AREX recommends conducting reagent titration tailored to each testing system for optimal detection results.

WB	1:2000 - 1:5000
IP	1:100 - 1:200

*Results are sample-specific. Please refer to your local assay conditions and test parameters for reference.

PRODUCT OVERVIEW

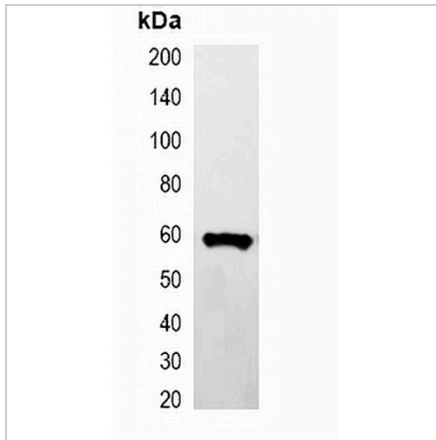
Description	Mouse monoclonal antibody to GST-tag
Specificity	Recognizes C-terminal, internal, and N-terminal GST-tag fusion proteins.
Antibody Type	Primary antibody, Tag
Immunogen	KLH-conjugated synthetic peptide encompassing a sequence of GST-tag. The exact sequence is proprietary.
Purification	Affinity chromatography
Form/Buffer	Liquid in 0.42% Potassium phosphate, 0.87% Sodium chloride, pH 7.3, 30% glycerol, and 0.01% sodium azide.

*AREX continuously optimizes our products. Webpage content may not reflect the latest updates. For inquiries, please contact info@arexbio.com or your local distributor.

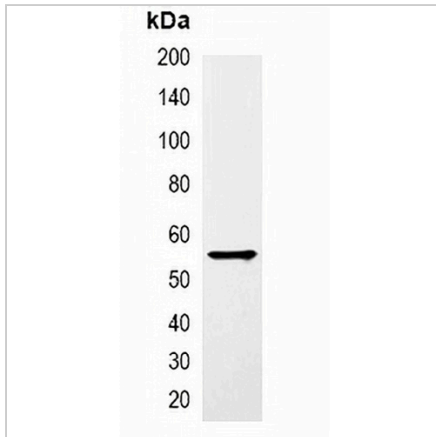
*Clone Number, Reactivity, Source/Host and Clonality can be found in the product name and Key Features section above.

DATASHEET**GST-tag Mouse Monoclonal Antibody(C2043)**

CAT. NO. AMA01655

DATA

Western blot analysis of over-expressed GST-tagged protein in 293T cell lysate.



Immunoprecipitation of GST-tagged protein from HEK293T cells transfected with vector overexpressing GST tag, using Anti-GST-tag Antibody.

STORAGE

Store at 4°C short term. For long term storage, store at -20°C, avoiding freeze/thaw cycles.

NOTE

For Research Use Only. Not for diagnostic, therapeutics, prophylactic or in vivo use.