

DATASHEET

MBP-tag Mouse Monoclonal Antibody(C2050)

CAT. NO. AMA01662

KEY FEATURES

Target	MBP-tag	Source / Host	Mouse
Reactivity		Clonality	Monoclonal
Applications	WB, IF/ICC, IP	Conjugation	Unconjugated
Form / Buffer	Liquid in 0.42% Potassium phosphate, 0.87% Sodium chloride, pH 7.3, 30% glycerol, and 0.01% sodium azide.	Storage	at-20°C

BACKGROUND

Maltose-binding protein (MBP) is a 42 kDa protein from E. coli used as a fusion tag to enhance the solubility and stability of recombinant proteins. MBP-tagged proteins can be purified using amylose resin affinity chromatography. Anti-MBP antibodies enable detection of MBP fusion proteins in WB, ELISA, and IP.

APPLICATION

To ensure optimal assay performance, AREX recommends conducting reagent titration tailored to each testing system for optimal detection results.

WB	1:2000 - 1:5000
IF/ICC	1:200 - 1:500
IP	1:100 - 1:200

*Results are sample-specific. Please refer to your local assay conditions and test parameters for reference.

PRODUCT OVERVIEW

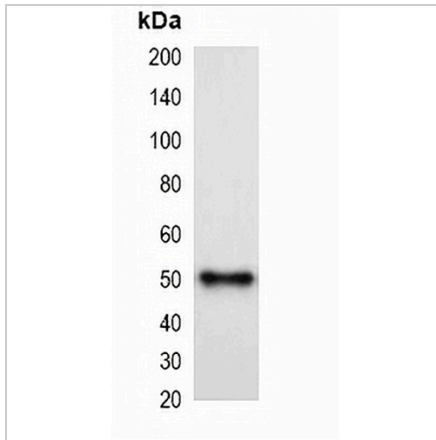
Description	Mouse monoclonal antibody to MBP-tag
Specificity	Recognizes MBP and MBP tag fusion proteins.
Antibody Type	Primary antibody,Tag
Immunogen	Recombinant protein corresponding to MBP-tag.
Purification	Affinity chromatography
Form/Buffer	Liquid in 0.42% Potassium phosphate, 0.87% Sodium chloride, pH 7.3, 30% glycerol, and 0.01% sodium azide.

*AREX continuously optimizes our products. Webpage content may not reflect the latest updates. For inquiries, please contact info@arexbio.com or your local distributor.

*Clone Number, Reactivity, Source/Host and Clonality can be found in the product name and Key Features section above.

DATASHEET**MBP-tag Mouse Monoclonal Antibody(C2050)**

CAT. NO. AMA01662

DATA

Western blot analysis of over-expressed MBP-tagged protein in 293T cell lysate.

STORAGE

Store at 4°C short term. For long term storage, store at -20°C, avoiding freeze/thaw cycles.

NOTE

For Research Use Only. Not for diagnostic, therapeutics, prophylactic or in vivo use.