

DATASHEET

HRP-conjugated Myc-tag Mouse Monoclonal Antibody(C2057)

CAT. NO. AMA01669

KEY FEATURES

Target	Myc-tag	Source / Host	Mouse
Reactivity		Clonality	Monoclonal
Applications	WB	Conjugation	HRP
Form / Buffer	Liquid in 0.42% Potassium phosphate, 0.87% Sodium chloride, pH 7.3, 30% glycerol, and 0.01% sodium azide.		Storage at-20°C

BACKGROUND

The Myc-tag is a polypeptide protein tag derived from the c-myc gene product (EQKLISEEDL), used for affinity chromatography, then used for separation, identification, and detection of recombinant proteins. Myc-tag is commonly added to either the N- or C-terminus of a recombinant protein and recognized by anti-Myc antibodies in Western blot, IP, IF, IHC, and FACS.

APPLICATION

To ensure optimal assay performance, AREX recommends conducting reagent titration tailored to each testing system for optimal detection results.

WB	1:5000 - 1:20000
----	------------------

*Results are sample-specific. Please refer to your local assay conditions and test parameters for reference.

PRODUCT OVERVIEW

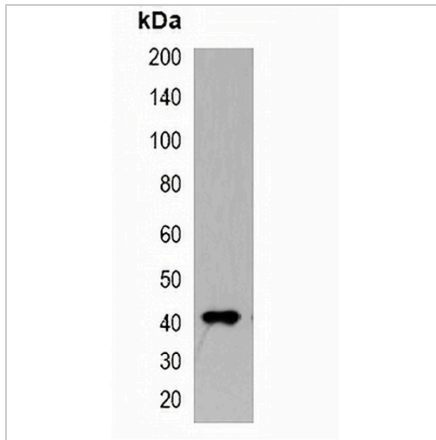
Description	Mouse monoclonal antibody to Myc-tag-HRP labeled
Specificity	Recognizes Myc-tag fusion proteins.
Antibody Type	Primary antibody,Tag
Immunogen	KLH-conjugated synthetic peptide encompassing a sequence of Myc-tag-HRP labeled. The exact sequence is proprietary.
Purification	Affinity chromatography
Form/Buffer	Liquid in 0.42% Potassium phosphate, 0.87% Sodium chloride, pH 7.3, 30% glycerol, and 0.01% sodium azide.

*AREX continuously optimizes our products. Webpage content may not reflect the latest updates. For inquiries, please contact info@arexbio.com or your local distributor.

*Clone Number, Reactivity, Source/Host and Clonality can be found in the product name and Key Features section above.

DATASHEET**HRP-conjugated Myc-tag Mouse Monoclonal Antibody(C2057)**

CAT. NO. AMA01669

DATA

Western blot analysis of over-expressed Myc-tagged protein in 293T cell lysate.

STORAGE

Store at 4°C short term. For long term storage, store at -20°C, avoiding freeze/thaw cycles.

NOTE

For Research Use Only. Not for diagnostic, therapeutics, prophylactic or in vivo use.