

DATASHEET

SRT-tag Mouse Monoclonal Antibody(C2060)

CAT. NO. AMA01672

KEY FEATURES

Target	SRT-tag	Source / Host	Mouse
Reactivity		Clonality	Monoclonal
Applications	WB	Conjugation	Unconjugated
Form / Buffer	Liquid in 0.42% Potassium phosphate, 0.87% Sodium chloride, pH 7.3, 30% glycerol, and 0.01% sodium azide.		Storage at-20°C

BACKGROUND

The SRT-tag (Short Recognition Tag) is a small peptide epitope used as a fusion tag for the detection and purification of recombinant proteins. Its compact size minimizes interference with protein folding and bioactivity, while specific antibodies enable detection in WB, IP, and IF.

APPLICATION

To ensure optimal assay performance, AREX recommends conducting reagent titration tailored to each testing system for optimal detection results.

WB	1:2000 - 1:5000
----	-----------------

*Results are sample-specific. Please refer to your local assay conditions and test parameters for reference.

PRODUCT OVERVIEW

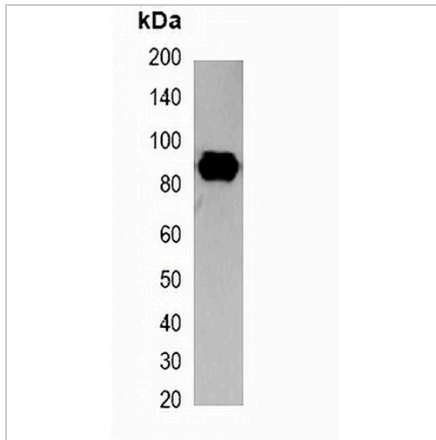
Description	Mouse monoclonal antibody to SRT-tag
Specificity	Recognizes SRT Tag recominant protein.
Antibody Type	Primary antibody,Tag
Immunogen	Recombinant protein corresponding to SRT-tag.
Purification	Affinity chromatography
Form/Buffer	Liquid in 0.42% Potassium phosphate, 0.87% Sodium chloride, pH 7.3, 30% glycerol, and 0.01% sodium azide.

*AREX continuously optimizes our products. Webpage content may not reflect the latest updates. For inquiries, please contact info@arexbio.com or your local distributor.

*Clone Number, Reactivity, Source/Host and Clonality can be found in the product name and Key Features section above.

DATASHEET**SRT-tag Mouse Monoclonal Antibody(C2060)**

CAT. NO. AMA01672

DATA

Western blot analysis of over-expressed SRT-tagged protein in 293T cell lysate.

STORAGE

Store at 4°C short term. For long term storage, store at -20°C, avoiding freeze/thaw cycles.

NOTE

For Research Use Only. Not for diagnostic, therapeutics, prophylactic or in vivo use.