

**DATASHEET**

**Strep-tag Mouse Monoclonal Antibody(C2062)**

CAT. NO. AMA01674

**KEY FEATURES**

Target	Strep-tag	Source / Host	Mouse
Reactivity		Clonality	Monoclonal
Applications	WB	Conjugation	Unconjugated
Form / Buffer	Liquid in 0.42% Potassium phosphate, 0.87% Sodium chloride, pH 7.3, 30% glycerol, and 0.01% sodium azide.		Storage at-20°C

**BACKGROUND**

The Strep-tag is an eight-amino-acid peptide (WSHPQFEK) that binds with high affinity to streptavidin and its engineered variant Strep-Tactin. It enables one-step affinity purification of recombinant proteins under physiological conditions, making it ideal for purifying functional protein complexes. Anti-Strep antibodies detect Strep-tagged proteins in WB and ELISA.

**APPLICATION**

To ensure optimal assay performance, AREX recommends conducting reagent titration tailored to each testing system for optimal detection results.

WB	1:2000 - 1:5000
----	-----------------

\*Results are sample-specific. Please refer to your local assay conditions and test parameters for reference.

**PRODUCT OVERVIEW**

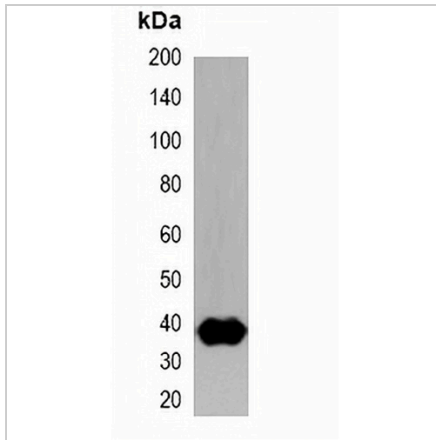
Description	Mouse monoclonal antibody to Strep-tag
Specificity	Recognizes Strep tag fusion proteins.
Antibody Type	Primary antibody,Tag
Immunogen	KLH-conjugated synthetic peptide encompassing a sequence of Strep-tag. The exact sequence is proprietary.
Purification	Affinity chromatography
Form/Buffer	Liquid in 0.42% Potassium phosphate, 0.87% Sodium chloride, pH 7.3, 30% glycerol, and 0.01% sodium azide.

\*AREX continuously optimizes our products. Webpage content may not reflect the latest updates. For inquiries, please contact [info@arexbio.com](mailto:info@arexbio.com) or your local distributor.

\*Clone Number, Reactivity, Source/Host and Clonality can be found in the product name and Key Features section above.

**DATASHEET****Strep-tag Mouse Monoclonal Antibody(C2062)**

CAT. NO. AMA01674

**DATA**

Western blot analysis of over-expressed Strep-tagged protein in 293T cell lysate.

**STORAGE**

Store at 4°C short term. For long term storage, store at -20°C, avoiding freeze/thaw cycles.

**NOTE**

For Research Use Only. Not for diagnostic, therapeutics, prophylactic or in vivo use.