

DATASHEET

ABCB5 Mouse Monoclonal Antibody(C2072)

CAT. NO. AMA01684

KEY FEATURES

Target	ABCB5	Source / Host	Mouse
Reactivity	Human	Clonality	Monoclonal
Applications	WB, IHC	Conjugation	Unconjugated
Form / Buffer	Liquid in 0.42% Potassium phosphate, 0.87% Sodium chloride, pH 7.3, 30% glycerol, and 0.01% sodium azide.		Storage at-20°C

BACKGROUND

Energy-dependent efflux transporter responsible for decreased drug accumulation in multidrug-resistant cells . Specifically present in limbal stem cells, where it plays a key role in corneal development and repair .

APPLICATION

To ensure optimal assay performance, AREX recommends conducting reagent titration tailored to each testing system for optimal detection results.

WB	1:1000 - 1:2000
IHC	1:200 - 1:500

*Results are sample-specific. Please refer to your local assay conditions and test parameters for reference.

PRODUCT OVERVIEW

Description	Mouse monoclonal antibody to ABCB5
Specificity	Recognizes endogenous levels of ABCB5 protein.
Antibody Type	Primary antibody
Immunogen	KLH-conjugated synthetic peptide encompassing a sequence of human ABCB5. The exact sequence is proprietary.
Purification	Affinity chromatography
Molecular Weight	Predicted: 138 kD; Observed: 95 kD
Form/Buffer	Liquid in 0.42% Potassium phosphate, 0.87% Sodium chloride, pH 7.3, 30% glycerol, and 0.01% sodium azide.
Alternative Names	ATP-binding cassette sub-family B member 5; ABCB5 P-gp; P-glycoprotein ABCB5
Gene Symbol	ABCB5
Entrez Gene	340273(Human)
SwissProt	Q2M3G0(Human)

*AREX continuously optimizes our products. Webpage content may not reflect the latest updates. For inquiries, please contact info@arexbio.com or your local distributor.

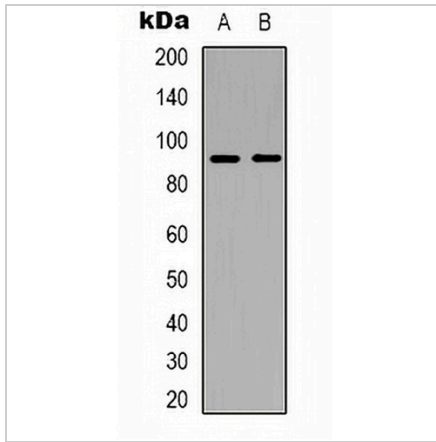
*Clone Number, Reactivity, Source/Host and Clonality can be found in the product name and Key Features section above.

DATASHEET

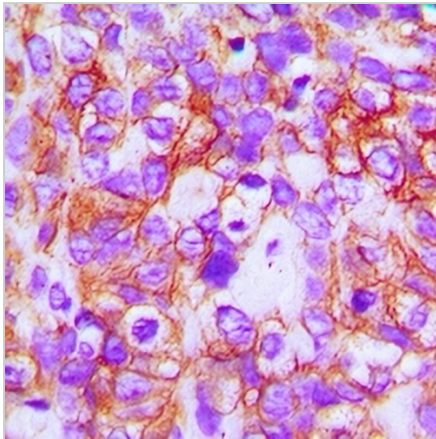
ABCB5 Mouse Monoclonal Antibody(C2072)

CAT. NO. AMA01684

DATA



Western blot analysis of ABCB5 expression in HeLa (A), 293T (B) whole cell lysates. (Predicted band size: 138 kD; Observed band size: 95 kD)



Immunohistochemical analysis of ABCB5 staining in human breast cancer formalin fixed paraffin embedded tissue section. The section was pre-treated using heat mediated antigen retrieval with sodium citrate buffer (pH 6.0). The section was then incubated with the antibody at room temperature and detected using an HRP conjugated compact polymer system. DAB was used as the chromogen. The section was then counterstained with haematoxylin and mounted with DPX.

STORAGE

Store at 4°C short term. For long term storage, store at -20°C, avoiding freeze/thaw cycles.

NOTE

For Research Use Only. Not for diagnostic, therapeutics, prophylactic or in vivo use.