

DATASHEET

Acetyl Lysine Mouse Monoclonal Antibody(C2073)

CAT. NO. AMA01685

KEY FEATURES

Target	Acetyl Lysine	Source / Host	Mouse
Reactivity	All	Clonality	Monoclonal
Applications	WB, IHC, IP	Conjugation	Unconjugated
Form / Buffer	Liquid in 0.42% Potassium phosphate, 0.87% Sodium chloride, pH 7.3, 30% glycerol, and 0.01% sodium azide.		Storage at-20°C

BACKGROUND

Lysine acetylation is a reversible post-translational modification catalyzed by acetyltransferases (HATs) and removed by deacetylases (HDACs/sirtuins). It regulates chromatin structure, transcription, metabolism, and protein-protein interactions. Pan acetyl-lysine antibodies detect acetylated lysine residues regardless of context and are widely used in WB, IP, IHC, and ChIP.

APPLICATION

To ensure optimal assay performance, AREX recommends conducting reagent titration tailored to each testing system for optimal detection results.

WB	1:1000 - 1:2000
IHC	1:200 - 1:500
IP	1:50 - 1:200

*Results are sample-specific. Please refer to your local assay conditions and test parameters for reference.

PRODUCT OVERVIEW

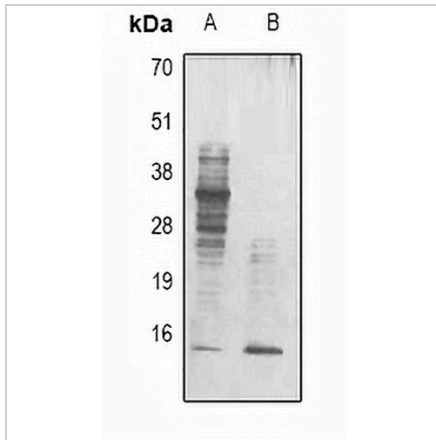
Description	Mouse monoclonal antibody to Acetyl Lysine
Specificity	Recognizes endogenous levels of Acetyl Lysine protein.
Antibody Type	Primary antibody
Immunogen	Purified protein corresponding to Acetyl Lysine.
Purification	Affinity chromatography
Form/Buffer	Liquid in 0.42% Potassium phosphate, 0.87% Sodium chloride, pH 7.3, 30% glycerol, and 0.01% sodium azide.

*AREX continuously optimizes our products. Webpage content may not reflect the latest updates. For inquiries, please contact info@arexbio.com or your local distributor.

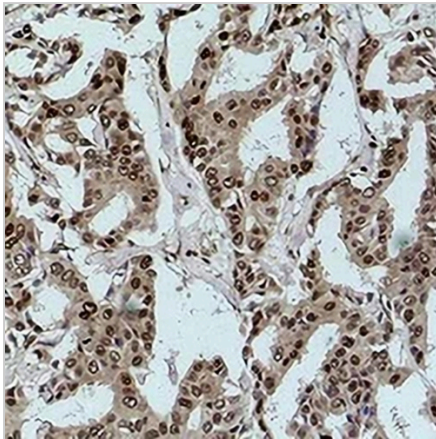
*Clone Number, Reactivity, Source/Host and Clonality can be found in the product name and Key Features section above.

DATASHEET**Acetyl Lysine Mouse Monoclonal Antibody(C2073)**

CAT. NO. AMA01685

DATA

Western blot analysis of Acetyl Lysine expression in mouse brain (A), HeLa TSA-treated (B) whole cell lysates.



Immunohistochemical analysis of Acetyl Lysine staining in human breast cancer formalin fixed paraffin embedded tissue section. The section was pre-treated using heat mediated antigen retrieval with sodium citrate buffer (pH 6.0). The section was then incubated with the antibody at room temperature and detected using an HRP conjugated compact polymer system. DAB was used as the chromogen. The section was then counterstained with haematoxylin and mounted with DPX.

STORAGE

Store at 4°C short term. For long term storage, store at -20°C, avoiding freeze/thaw cycles.

NOTE

For Research Use Only. Not for diagnostic, therapeutics, prophylactic or in vivo use.