

DATASHEET

Alpha-tubulin (Acetyl-K40) Mouse Monoclonal Antibody(C2078)

CAT. NO. AMA01690

KEY FEATURES

Target	Alpha-tubulin (Acetyl-K40)	Source / Host	Mouse
Reactivity	Human, Mouse, Rat	Clonality	Monoclonal
Applications	WB, IHC	Conjugation	Unconjugated
Form / Buffer	Liquid in 0.42% Potassium phosphate, 0.87% Sodium chloride, pH 7.3, 30% glycerol, and 0.01% sodium azide.	Storage	at-20°C

BACKGROUND

Tubulin is the major constituent of microtubules, protein filaments consisting of alpha- and beta-tubulin heterodimers . Microtubules grow by the addition of GTP-tubulin dimers to the microtubule end, where a stabilizing cap forms . Below the cap, tubulin dimers are in GDP-bound state, owing to GTPase activity of alpha-tubulin .

APPLICATION

To ensure optimal assay performance, AREX recommends conducting reagent titration tailored to each testing system for optimal detection results.

WB	1:1000 - 1:2000
IHC	1:100 - 1:200

*Results are sample-specific. Please refer to your local assay conditions and test parameters for reference.

PRODUCT OVERVIEW

Description	Mouse monoclonal antibody to Alpha-tubulin (Acetyl-K40)
Specificity	Recognizes endogenous levels of Alpha-tubulin protein only when acetylated at K40.
Antibody Type	Primary antibody
Immunogen	KLH-conjugated synthetic acetylated peptide corresponding to residues surrounding K40 of human Alpha-tubulin protein. The exact sequence is proprietary.
Purification	Affinity chromatography
Molecular Weight	Predicted: 50 kD; Observed: 52 kD
Form/Buffer	Liquid in 0.42% Potassium phosphate, 0.87% Sodium chloride, pH 7.3, 30% glycerol, and 0.01% sodium azide.
Alternative Names	Tubulin alpha-1B chain; Alpha-tubulin ubiquitous; Tubulin K-alpha-1; Tubulin alpha-ubiquitous chain
Gene Symbol	TUBA1B
Entrez Gene	7277(Human)
SwissProt	P68363(Human)

*AREX continuously optimizes our products. Webpage content may not reflect the latest updates. For inquiries, please contact info@arexbio.com or your local distributor.

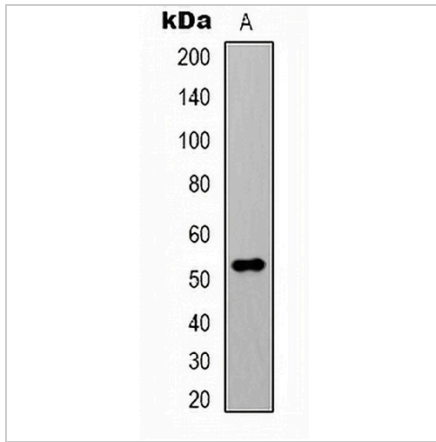
*Clone Number, Reactivity, Source/Host and Clonality can be found in the product name and Key Features section above.

DATASHEET

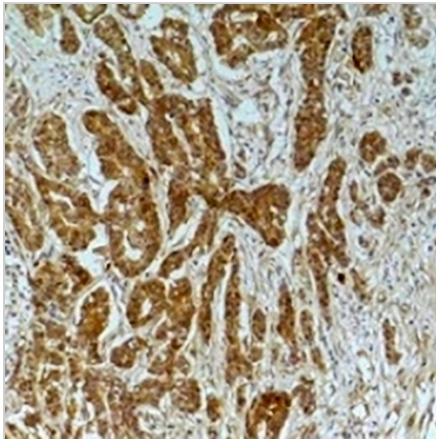
Alpha-tubulin (Acetyl-K40) Mouse Monoclonal Antibody(C2078)

CAT. NO. AMA01690

DATA



Western blot analysis of Alpha-tubulin (Acetyl-K40) expression in HeLa (A) whole cell lysates. (Predicted band size: 50 kD; Observed band size: 52 kD)



Immunohistochemical analysis of Alpha-tubulin (Acetyl-K40) staining in human breast cancer; mouse brain formalin fixed paraffin embedded tissue section. The section was pre-treated using heat mediated antigen retrieval with sodium citrate buffer (pH 6.0). The section was then incubated with the antibody at room temperature and detected using an HRP conjugated compact polymer system. DAB was used as the chromogen. The section was then counterstained with haematoxylin and mounted with DPX.

STORAGE

Store at 4°C short term. For long term storage, store at -20°C, avoiding freeze/thaw cycles.

NOTE

For Research Use Only. Not for diagnostic, therapeutics, prophylactic or in vivo use.