

DATASHEET

Alpha-tubulin Mouse Monoclonal Antibody(C2079)

CAT. NO. AMA01691

KEY FEATURES

Target	Alpha-tubulin	Source / Host	Mouse
Reactivity	Human, Mouse, Rat	Clonality	Monoclonal
Applications	WB, IHC, IF/ICC, IP	Conjugation	Unconjugated
Form / Buffer	Liquid in 0.42% Potassium phosphate, 0.87% Sodium chloride, pH 7.3, 0.2% BSA, 30% glycerol, and 0.01% sodium azide.	Storage	at-20°C

BACKGROUND

Tubulin is the major constituent of microtubules, a cylinder consisting of laterally associated linear protofilaments composed of alpha- and beta-tubulin heterodimers. Microtubules grow by the addition of GTP-tubulin dimers to the microtubule end, where a stabilizing cap forms. Below the cap, tubulin dimers are in GDP-bound state, owing to GTPase activity of alpha-tubulin.

APPLICATION

To ensure optimal assay performance, AREX recommends conducting reagent titration tailored to each testing system for optimal detection results.

WB	1:3000 - 1:10000
IHC	1:50 - 1:100
IF/ICC	1:50 - 1:100
IP	1:50 - 1:100

*Results are sample-specific. Please refer to your local assay conditions and test parameters for reference.

PRODUCT OVERVIEW

Description	Mouse monoclonal antibody to Alpha-tubulin
Specificity	Recognizes endogenous levels of Alpha-tubulin protein.
Antibody Type	Primary antibody
Immunogen	Recombinant protein corresponding to human Alpha-tubulin.
Purification	Affinity chromatography
Molecular Weight	Predicted: 50 kD; Observed: 52 kD
Form/Buffer	Liquid in 0.42% Potassium phosphate, 0.87% Sodium chloride, pH 7.3, 0.2% BSA, 30% glycerol, and 0.01% sodium azide.
Alternative Names	TUBA3; Tubulin alpha-1A chain; Alpha-tubulin 3; Tubulin B-alpha-1; Tubulin alpha-3 chain
Gene Symbol	TUBA1A
Entrez Gene	7846; 10376(Human); 22142; 22143(Mouse); 64158; 500929(Rat)
SwissProt	Q71U36; P68363(Human); P68369; P05213(Mouse); P68370; Q6P9V9(Rat)

*AREX continuously optimizes our products. Webpage content may not reflect the latest updates. For inquiries, please contact info@arexbio.com or your local distributor.

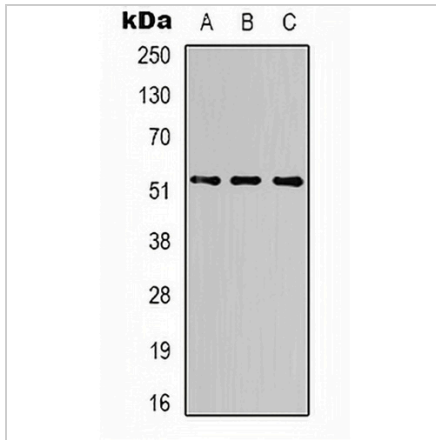
*Clone Number, Reactivity, Source/Host and Clonality can be found in the product name and Key Features section above.

DATASHEET

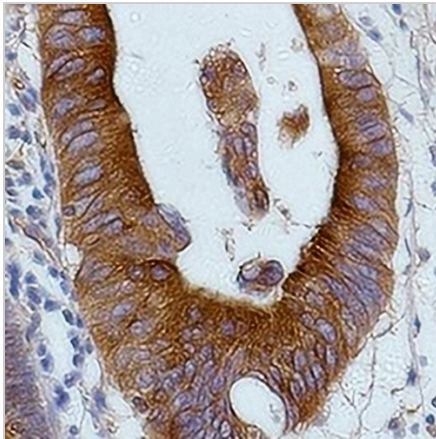
Alpha-tubulin Mouse Monoclonal Antibody(C2079)

CAT. NO. AMA01691

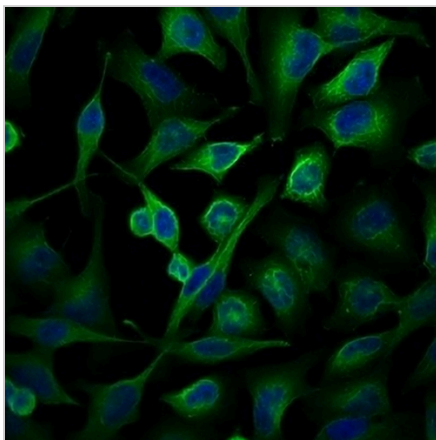
DATA



Western blot analysis of Alpha-tubulin expression in HeLa (A), mouse brain (B), rat brain (C) whole cell lysates. (Predicted band size: 50 kD; Observed band size: 52 kD)



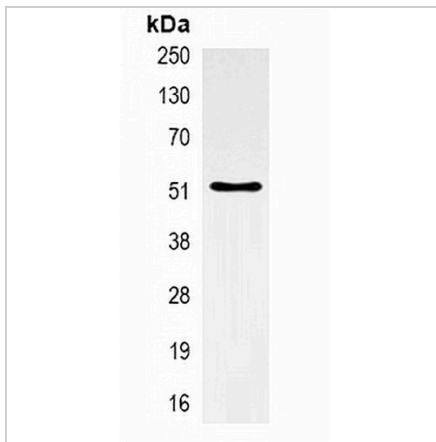
Immunohistochemical analysis of Alpha-tubulin staining in human colon cancer formalin fixed paraffin embedded tissue section. The section was pre-treated using heat mediated antigen retrieval with sodium citrate buffer (pH 6.0). The section was then incubated with the antibody at room temperature and detected using an HRP conjugated compact polymer system. DAB was used as the chromogen. The section was then counterstained with haematoxylin and mounted with DPX.



Immunofluorescent analysis of Alpha-tubulin staining in HeLa cells. Formalin-fixed cells were permeabilized with 0.1% Triton X-100 in TBS for 5-10 minutes and blocked with 3% BSA-PBS for 30 minutes at room temperature. Cells were probed with the primary antibody in 3% BSA-PBS and incubated overnight at 4 °C in a humidified chamber. Cells were washed with PBST and incubated with a FITC-conjugated secondary antibody (green) in PBS at room temperature in the dark. DAPI was used to stain the cell nuclei (blue).

DATASHEET**Alpha-tubulin Mouse Monoclonal Antibody(C2079)**

CAT. NO. AMA01691

DATA (CONTINUED)

Immunoprecipitation of Alpha-tubulin from 0.5mg mouse brain whole cell extract lysate, using Anti-Alpha-tubulin Antibody.

STORAGE

Store at 4°C short term. For long term storage, store at -20°C, avoiding freeze/thaw cycles.

NOTE

For Research Use Only. Not for diagnostic, therapeutics, prophylactic or in vivo use.