

## DATASHEET

# Beta2A-tubulin Mouse Monoclonal Antibody(C2086)

CAT. NO. AMA01698

### KEY FEATURES

Target	Beta2A-tubulin	Source / Host	Mouse
Reactivity	Human, Mouse, Rat	Clonality	Monoclonal
Applications	WB, IP	Conjugation	Unconjugated
Form / Buffer	Liquid in 0.42% Potassium phosphate, 0.87% Sodium chloride, pH 7.3, 30% glycerol, and 0.01% sodium azide.		Storage at-20°C

### BACKGROUND

Tubulin is the major constituent of microtubules, a cylinder consisting of laterally associated linear protofilaments composed of alpha- and beta-tubulin heterodimers. Microtubules grow by the addition of GTP-tubulin dimers to the microtubule end, where a stabilizing cap forms. Below the cap, tubulin dimers are in GDP-bound state, owing to GTPase activity of alpha-tubulin.

### APPLICATION

To ensure optimal assay performance, AREX recommends conducting reagent titration tailored to each testing system for optimal detection results.

WB	1:50000 - 1:100000
IP	1:100 - 1:200

\*Results are sample-specific. Please refer to your local assay conditions and test parameters for reference.

### PRODUCT OVERVIEW

Description	Mouse monoclonal antibody to Beta2A-tubulin
Specificity	Recognizes endogenous levels of Beta2A-tubulin protein.
Antibody Type	Primary antibody
Immunogen	KLH-conjugated synthetic peptide encompassing a sequence of human Beta2A-tubulin. The exact sequence is proprietary.
Purification	Affinity chromatography
Molecular Weight	Predicted: 49 kD; Observed: 52 kD
Form/Buffer	Liquid in 0.42% Potassium phosphate, 0.87% Sodium chloride, pH 7.3, 30% glycerol, and 0.01% sodium azide.
Alternative Names	TUBB2; Tubulin beta-2A chain; Tubulin beta class IIa
Gene Symbol	TUBB2A
Entrez Gene	7280(Human); 22151(Mouse); 498736(Rat)
SwissProt	Q13885(Human); Q7TMM9(Mouse); P85108(Rat)

\*AREX continuously optimizes our products. Webpage content may not reflect the latest updates. For inquiries, please contact [info@arexbio.com](mailto:info@arexbio.com) or your local distributor.

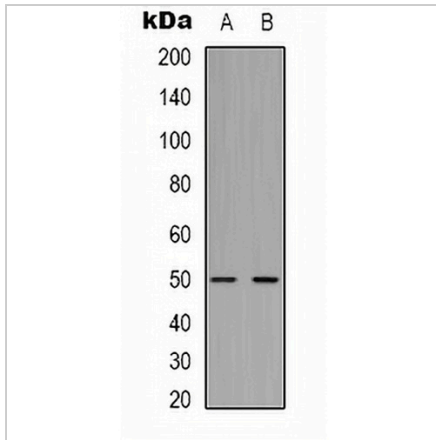
\*Clone Number, Reactivity, Source/Host and Clonality can be found in the product name and Key Features section above.

**DATASHEET**

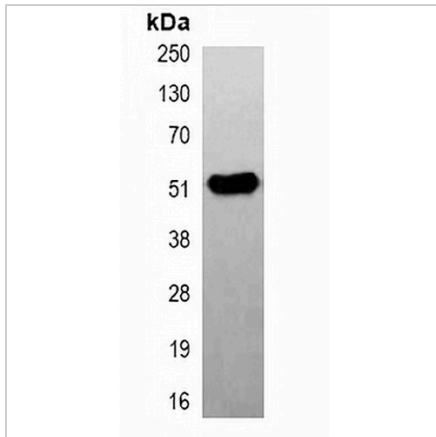
**Beta2A-tubulin Mouse Monoclonal Antibody(C2086)**

CAT. NO. AMA01698

**DATA**



Western blot analysis of Beta2A-tubulin expression in mouse brain (A), rat brain (B) whole cell lysates. (Predicted band size: 49 kD; Observed band size: 52 kD)



Immunoprecipitation of Beta2A-tubulin from 0.5mg mouse brain whole cell extract lysate, using Anti-Beta2A-tubulin Antibody.

**STORAGE**

Store at 4°C short term. For long term storage, store at -20°C, avoiding freeze/thaw cycles.

**NOTE**

For Research Use Only. Not for diagnostic, therapeutics, prophylactic or in vivo use.